



Raven Road, Yoxall, Burton-On-Trent
£290,000

3 1 2



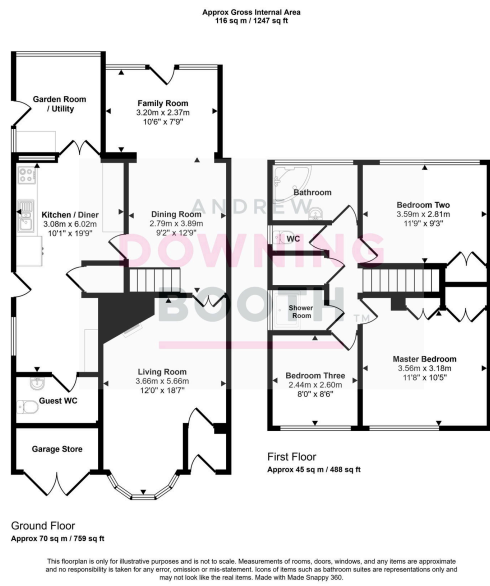
No upward chain - A wonderfully spacious and truly charming three double bedroom home in the desirable village of Yoxall. This impressive semi-detached property in Raven Road offers abundant potential, boasting character features, a fabulous choice of living space and consistently generous room sizes.

Yoxall is known for its quaint and picturesque nature, surrounded by endless rural countryside that offers tranquil and leafy walks and trails for any keen ramblers, whilst the locally cherished Crown Inn pub sits within walking distance and both the breathtaking Cannock Chase and the centre of Lichfield are within a twenty minute drive via scenic country roads.

The accommodation is set across two floors, with an entrance porch, characterful living room, very generous family/dining room, traditional style kitchen, utility room and guest WC all to the ground floor, whilst the first floor is home to all three double bedrooms, a bathroom, shower room and separate WC. An equally appealing plot consists of a colourful frontage with off road parking, a garage store and a private, idyllic rear garden.

This property exudes significant potential and simply must be viewed in order to be appreciated.





- Three Double Bedroom Semi- Detached Property
- Fabulous Living Space
- Colourful, Mature & Private Rear Garden
- Council Tax Band: C
- No Upward Chain
- Consistently Impressive Room Sizes Across Both Floors
- Enjoying Exposed Timber Beams & Exposed Brickwork
- EPC Rating: TBC

