



POWERED BY
JOHN BUSH **exp**™ **UK**

@ john.bush@exp.uk.com

johnbush.exp.uk.com

📞 07930 599 166

London Road, Deal, Kent, CT14 9TE

£525,000

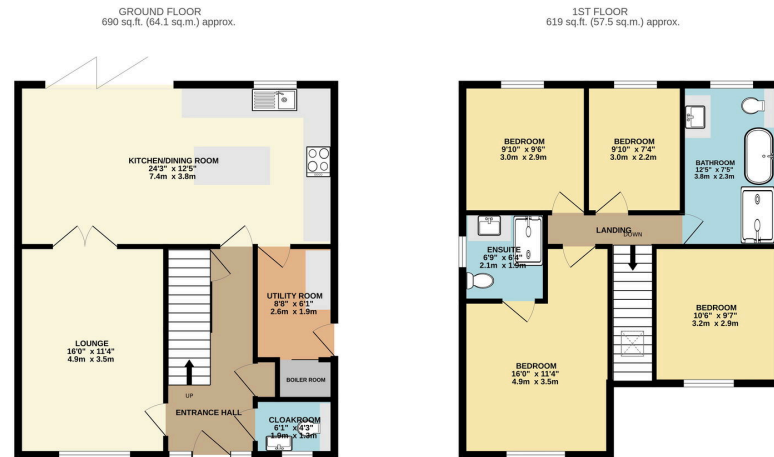
🛏️ 4 🚿 2 🛋️ 2



- QUOTE JB0460 WHEN ENQUIRING
- CLOSE TO TOWN CENTRE AND MAINLINE TRAINSTATION
- AIR SOURCED AND UNDER FLOOR HEATING
- DISCREET PRIVATE POSITION
- ELECTRIC CAR CHARGING PORT
- HIGH SPECIFICATION FINISH THROUGHOUT
- STUNNING KITCHENS AND BATHROOMS
- CRAFTED BY REPUTABLE LOCAL BUILDERS
- GREAT SIZED GARDENS
- 10 YEAR WARRANTY



Introducing an exclusive opportunity to own a brand new four bedroom detached home which is one of just a matching pair, masterfully built on a former police station site in the heart of Deal. These stunning residences blend contemporary, high-specification finishes, crafted by reputable local builders renowned for their exceptional quality. Each home boasts an elegant design offering all the modern comforts expected of luxury living. From state of the art kitchens fitted with premium quartz work tops and appliances to spacious, light-filled living areas and stylish bathrooms, these homes are designed for a lifestyle of sophistication and ease. With meticulous attention to detail, these properties offer the latest in energy-efficient insulation, air sourced heating with underfloor heating, and high-quality materials throughout. Internally In brief comprising: Entrance Hall, cloakroom WC, generous size front lounge with French doors into the stylish open planned kitchen/dining



TOTAL FLOOR AREA: 1309 sq.ft. (121.6 sq.m.) approx.
 While every attempt has been made to ensure the accuracy of the floorplan contained here, measurements of floors, windows, rooms and any other items are approximate and no responsibility is taken for any error, omission or mis-statement. This plan is for illustrative purposes only and should be used as such by any prospective purchaser. The services, systems and appliances shown have not been tested and no guarantee as to their operability or efficiency can be given.
 Made with MemoPro 2020/1

