



GREAT WESTERN WAY, Kingswinford, DY6 7BA

Offers In Region Of £395,000

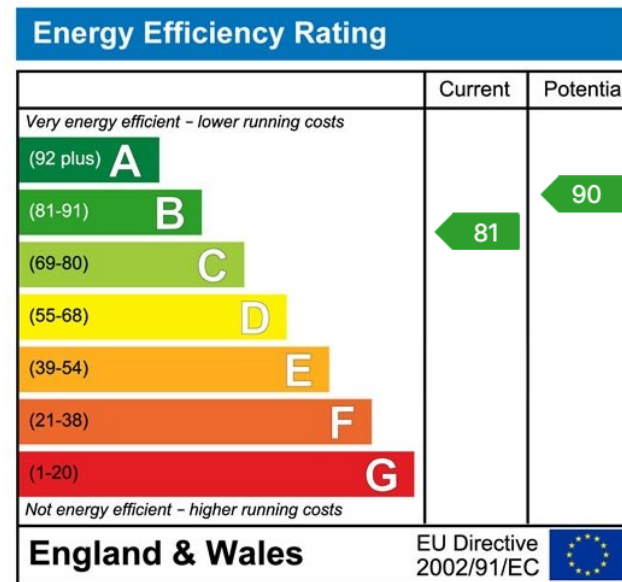
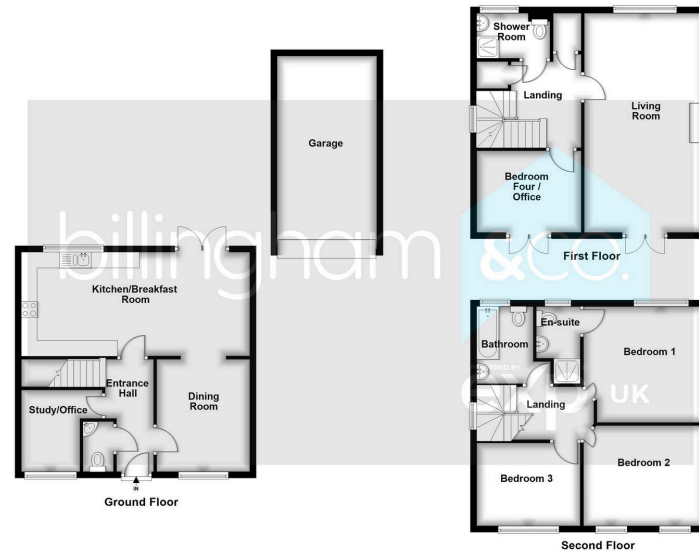
4 3 2

- A stunning detached family home, arranged over three floors. Built by Taylor Wimpey.
- Occupying a prominent position upon this modern Himley View development.
- Offering plenty of living space throughout.
- To the Ground Floor - Entrance Hall, Cloakroom, Study/Playroom, open plan Breakfast Kitchen with a Dining Room to the side, Ensuite and a separate Family Bathroom.
- To the First Floor - Landing, Shower Room, Bedroom Four / Office, Large Living Room to the Rear - beautiful Rear Garden, Garage and driveway.
- EPC Rating - B.



Occupying a PROMINENT POSITION on this modern Himley View development, this STUNNING DETACHED FAMILY HOME was built by Taylor Wimpey and is arranged over THREE FLOORS, offering versatile and spacious living accommodation throughout. Benefiting from a stunning open plan Breakfast Kitchen with a Dining Room to the side, a downstairs Study/Office, a beautiful Living Room found to the first floor with further Office/Bedroom and a Shower Room, with THREE FURTHER BEDROOMS found to the second floor, with an Ensuite and a separate Family Bathroom. To the Rear is a good sized and beautifully presented Garden with a Garage to the side. Offering ready to move in living accommodation, an EARLY VIEWING IS ADVISED.





Sales 01384 444 004 / Lettings 01384 445 075
 hello@billingham.properties
 www.billingham.properties



Agents Note: Whilst every care has been taken to prepare these particulars, they are for guidance purposes only. All measurements are approximate and are for general guidance purposes only and whilst every care has been taken to ensure their accuracy, they should not be relied upon and potential buyers are advised to recheck the measurements.