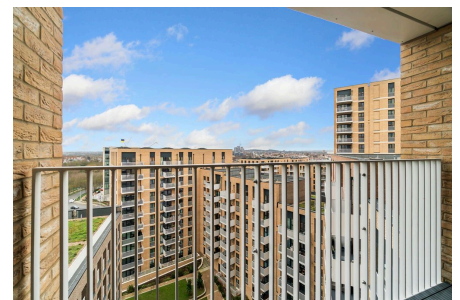


Baronet Court, Flat 217, Lakeside Drive,

Guide Price £375,000-£400,000

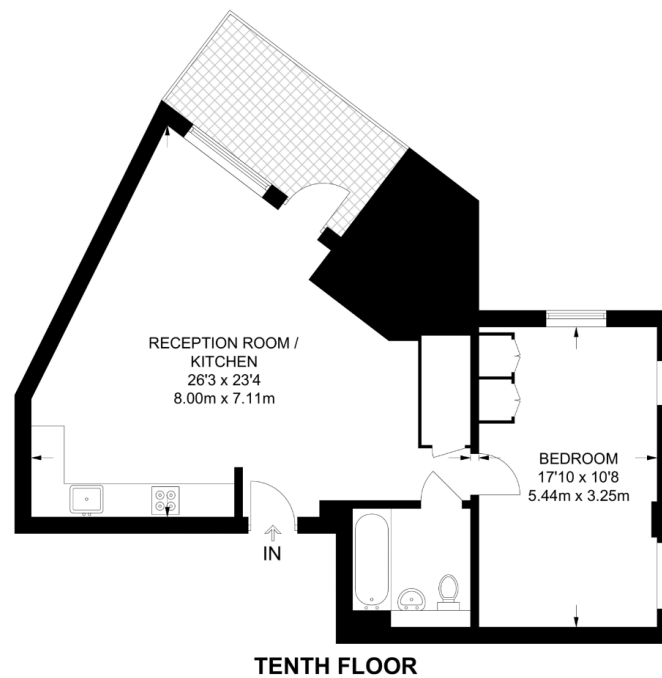
1 1 1

*****PLEASE QUOTE LT071 FOR ALL ENQUIRIES*******Spacious 1-Bedroom Apartment with Balcony in Prime Location**

Nestled in the heart of NW10, this stylish and contemporary 1-bedroom apartment offers 654 sqft of well-designed living space and is being sold chain-free – an ideal opportunity for first-time buyers and investors alike.

Key Features

- Chain Free
- Large Private Balcony
- Great Condition
- Large Living Area
- Within Easy Reach of Coffee Shops & Amenities Within the Development
- 1 Double Bedroom
- Modern Fitted Kitchen
- 0.2 Miles to Park Royal Station
- New Build
- PLEASE QUOTE LT0751 FOR ALL ENQUIRIES



APPROXIMATE GROSS INTERNAL AREA
654 SQ FT / 60.8 SQ M

This plan has been drawn for illustrative and identification purposes only.