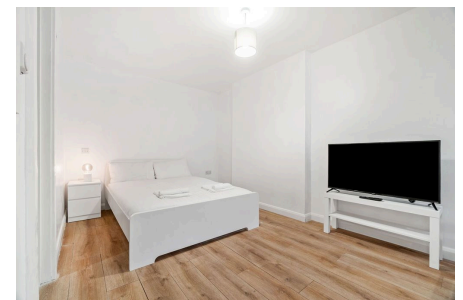
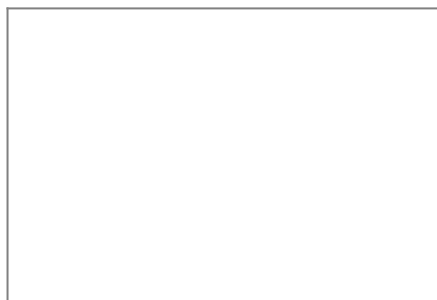


Garratt Lane, SW17

Guide Price £200,000-£235,000

1 1 1

*****PLEASE QUOTE LT0751 FOR ALL ENQUIRIES*******Modern Studio Apartment with South-Facing Aspect in Vibrant Location**

Located on sought-after Garratt Lane, SW17, this well-presented studio apartment offers a contemporary lifestyle in the heart of Tooting. Spanning 316 sqft, this bright and airy property is perfect for first-time buyers, professionals, or investors seeking a prime location.

Key Features

- Long Lease
- Chain Free & Vacant
- Bright and Airy Space
- Close to Tooting Broadway Market
- South-Facing Orientation
- 316 Sqft
- Ideal for Professionals or Investors
- Own Private Entrance
- 2-minute walk to Tooting Broadway Tube Station (Northern Line).
- PLEASE QUOTE LT0751 FOR ALL ENQUIRIES

