



Your Logo

Lee Road, Saunderton Lee, HP27

£1,100PCM (Deposit: £1,269)

🛏 1 🚿 1 🚪 1



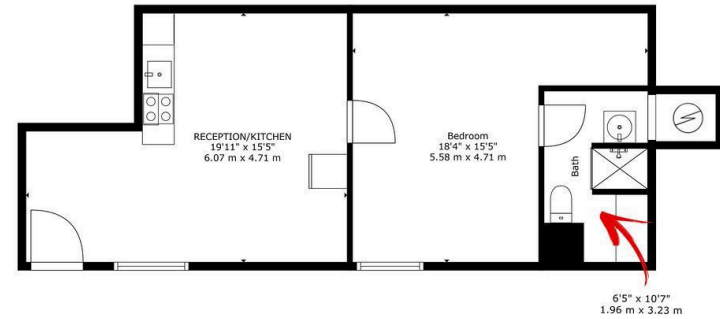
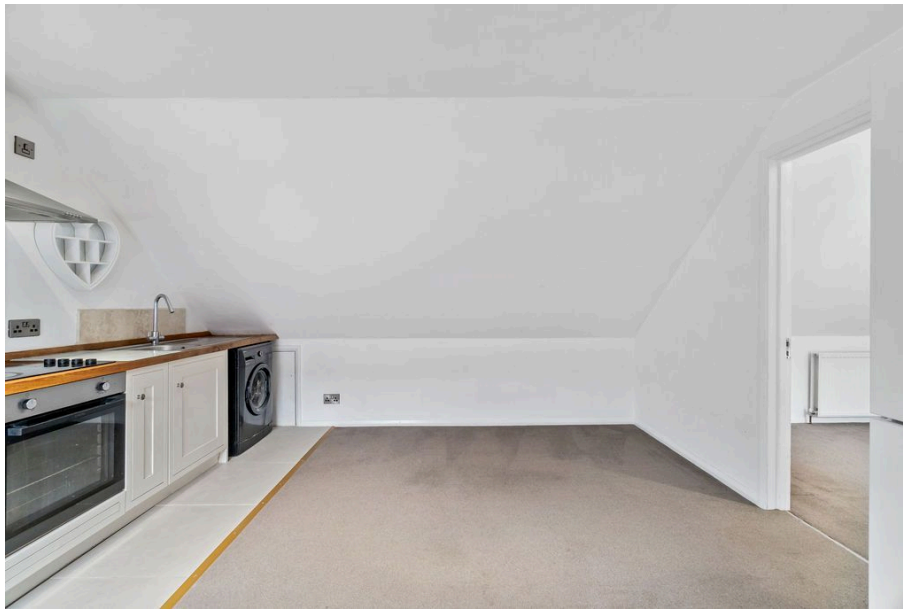
Tax Band: B Furnished: Not specified

**\*\*\*Please Quote LT0751 for all Enquiries\*\*\***

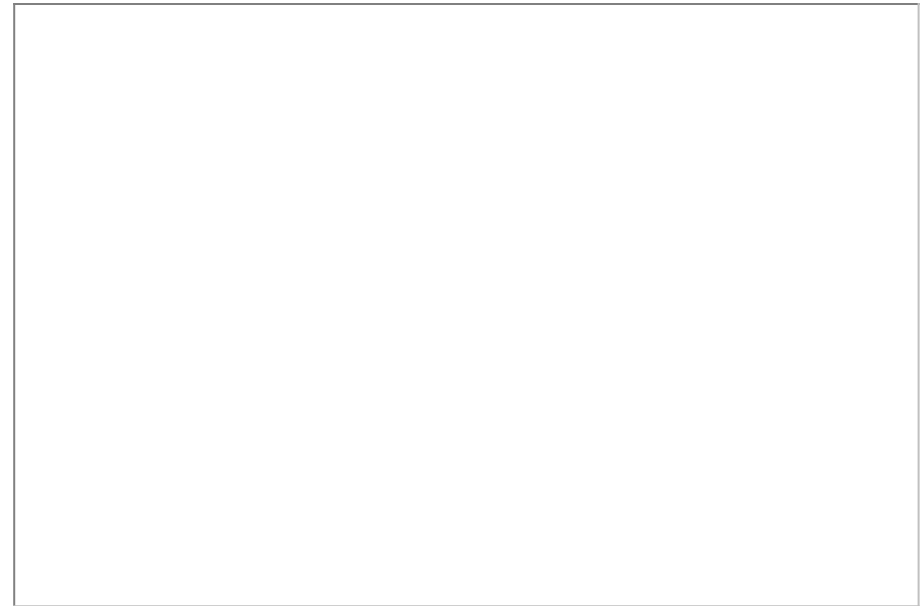
**1 Bedroom Flat for Rent – Princes Risborough Golf Club –  
Vacant and Available Immediately**

This charming 1-bedroom flat, measuring 543 sq. ft., is now vacant and available to rent immediately. Set in the picturesque surroundings of Princes Risborough Golf Club, this property offers tranquil living with stunning views over the course.





**TOTAL: 543 sq. ft, 50 m2**  
For Illustrative Purposes Only. Confirm Measurements Prior To Making Any Decisions.



eXp World UK Ltd is a registered company at Corporation Service Company (UK) Limited, 5 Churchill Place, 10th Floor, London, United Kingdom, E14 5HU. Registered company number is 12016573. VAT Registration Number is 327 4120 29