



LUKE TUBB

exp[®] UK

@luke.tubb@exp.uk.com

luketubb.exp.uk.com

07474 207 457

Madeira Road, SW16

£3,800PCM (Deposit: £4,384)

🛏️ 6 🚿 4 🚺 2

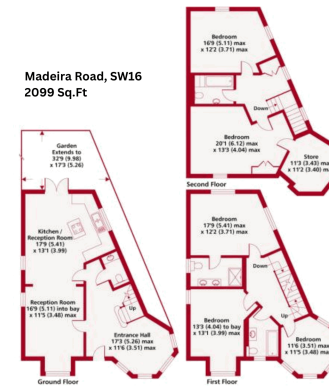
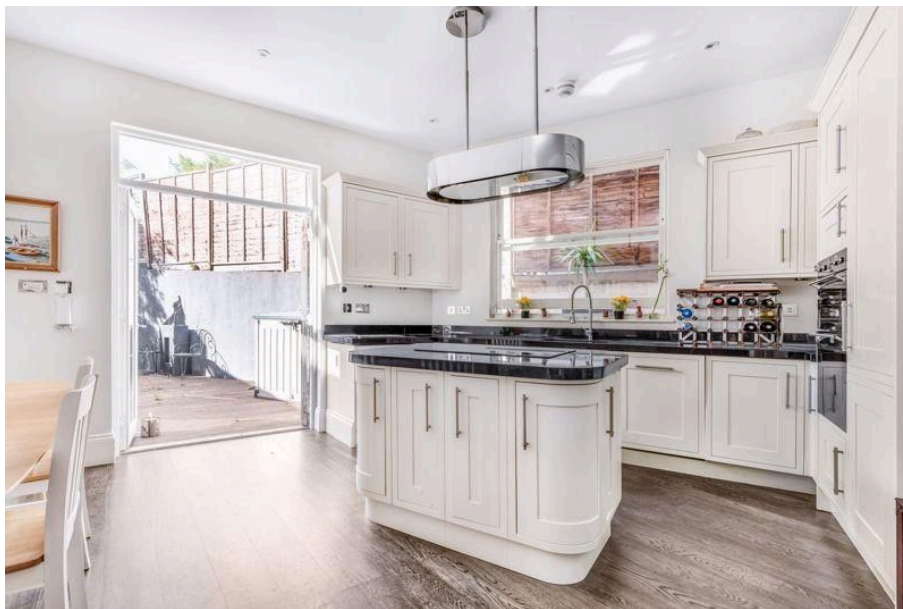


Tax Band: E Furnished: Not specified

*****Please Quote Ref LT0751 For All Enquiries*****

Beautifully presented Six bedroom detached house (2099 Sq.Ft) with off street parking and delightful private garden. Ideally situated close to Streatham High Road offering access to the city via Streatham (5 minutes) and Streatham Hill (15 minutes) stations.





While every attempt has been made to ensure the accuracy of the floor plan contained herein, measurements of doors, windows and rooms are approximate and are not intended to be used as such by any prospective purchaser. Specifications are given in metres on the gross internal floor area of the property if quoted on the plan and in square feet for general guidance only and should not be relied on as a basis of valuation.



Score	Energy rating	Current	Potential
92+	A		92 A
81-91	B	85 B	
69-80	C		
55-68	D		
39-54	E		
21-38	F		
1-20	G		

The graph shows this property's current and potential energy rating.