





2A Deepdale Avenue, Royton, Oldham

£424,950

🛏️ 4 🚿 2 🛋️ 1

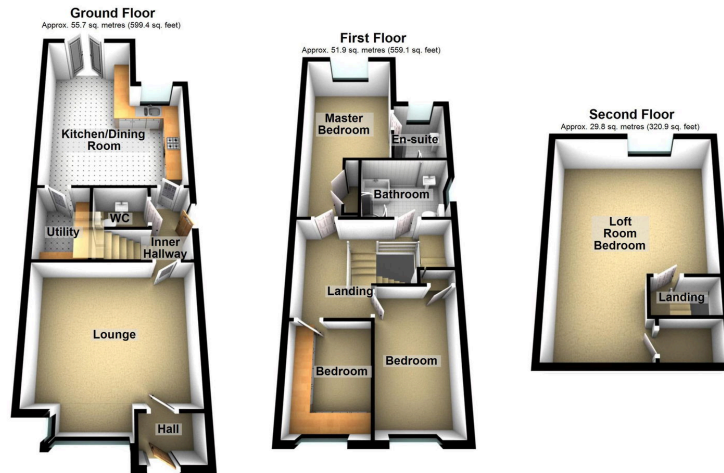


- Individual Detached Family Home
- Large Driveway & Detached Garage
- Popular & Convenient Location
- uPVC Double Glazing & Gas Central Heating
- Four Bedrooms
- South Facing Rear Garden
- Fitted Kitchen/Dining & Utility Room
- EPC Rating - C

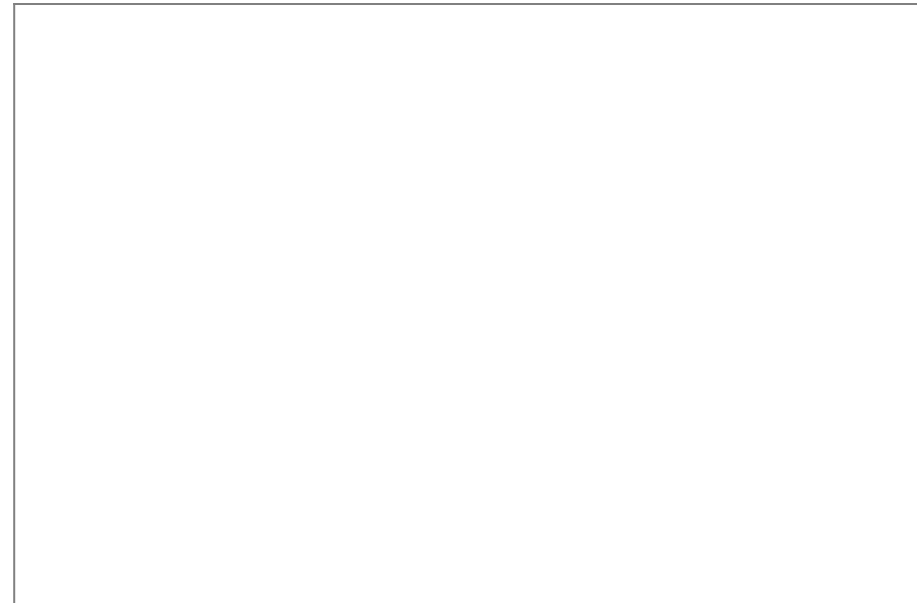




Located in this private spot is this gorgeous, individual, four bedroom, detached family home offering superb accommodation throughout. Internally the property comprises of: entrance hallway, lounge, large kitchen/dining room and a utility room to the ground floor and to the first floor three bedrooms (master en-suite) and a four piece family bathroom. To the second floor a spacious bedroom with Velux window. Externally a wrap around, South facing rear garden with a fantastic, raised composite decked area with pergola. To the front a sweeping driveway providing off road parking for numerous cars and a detached garage. Local schools, amenities and public transport links are within easy reach.



Total area: approx. 137.4 sq. metres (1479.4 sq. feet)



**Chadderton Office**

509 Middleton Road,  
Chadderton, Oldham,  
OL9 9SH

chadderton@kirkham-property.co.uk  
t: 0161 626 5688