



93 Turf Pit Lane, Moorside, Oldham

£289,950

🛏️ 3 🚿 1 🚗 2



- Semi Detached Family Home • Three Good Size Bedrooms
- Two Reception Rooms • Kitchen & Utility
- Porch & Hallway • Garage
- Close To Saddleworth • EPC: D



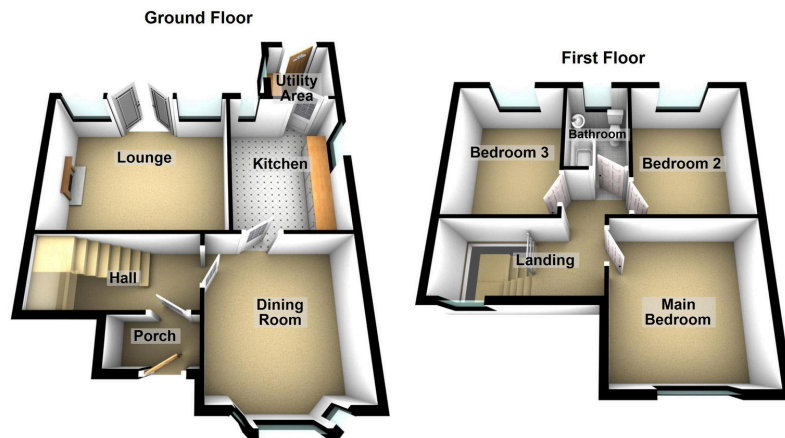
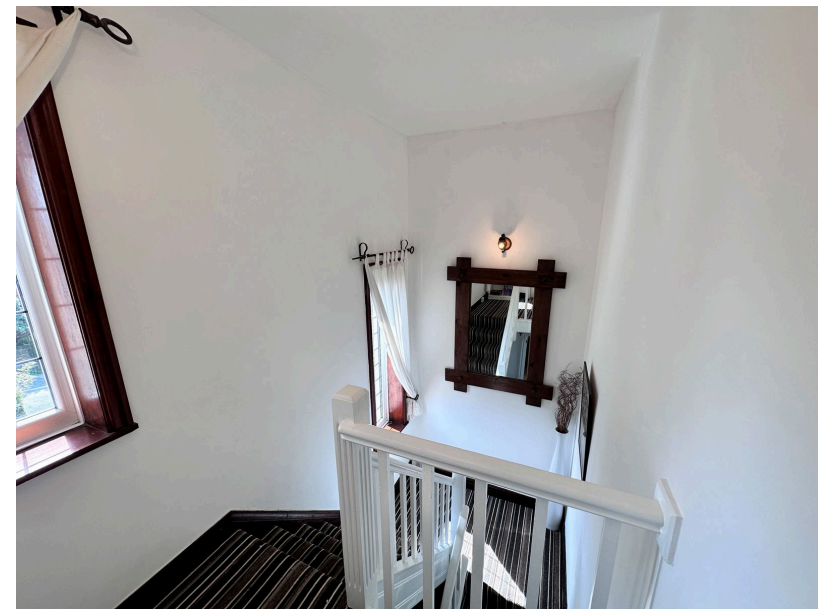
Offered for sale is this lovely character three bedroom semi detached family property located in Moorside just a stones throw from Saddleworth borders.

Accommodation comprising: Entrance porch, hallway, lounge, dining room, kitchen and utility room. To the first floor there are three good size bedrooms and a family bathroom.

Externally there is an enclosed rear garden, garage with electric door and a good size driveway.

Local schools with in easy reach as are shops and amenities.

Contact us today to arrange a viewing.



Energy Efficiency Rating		
	Current	Potential
Very energy efficient - lower running costs		
(92 plus) A		
(81-91) B		
(69-80) C		74
(55-68) D	62	
(39-54) E		
(21-38) F		
(1-20) G		
Not energy efficient - higher running costs		
England & Wales	EU Directive 2002/91/EC	

Chadderton Office

509 Middleton Road,
Chadderton, Oldham,
OL9 9SH

chadderton@kirkham-property.co.uk
t: 0161 626 5688