





## 15 Thirlmere Grove, Royton, Oldham, OL2 6SZ

Offers In Region Of £229,950

3 1 1

- No Chain
- Three Bedrooms
- Great Location
- Garage
- Semi Detached
- Large Kitchen/Dining Room
- Views Over Farmland
- EPC:



NO CHAIN. Offered for sale is this sweet three bedroom semi detached family home.

Located in a popular part of Royton not to far from the town centre.

Accommodation comprising: Entrance hallway, lounge and a large kitchen/dining room.

To the first floor are three bedrooms and a shower room.

Externally is a lovely rear garden, detached garage to the rear and a small garden to the front.

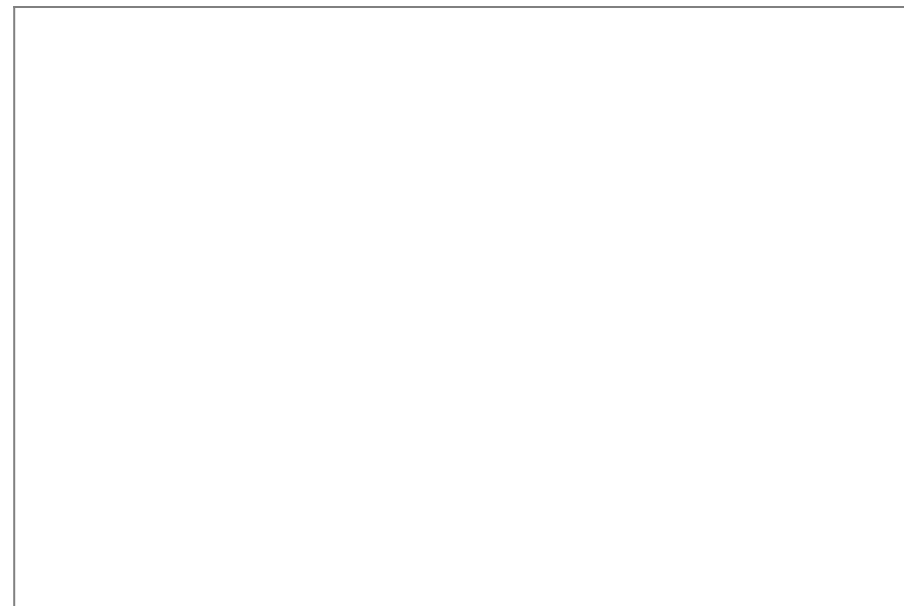
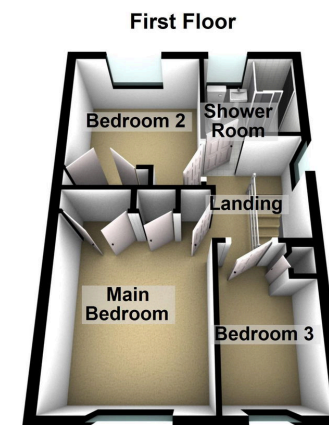
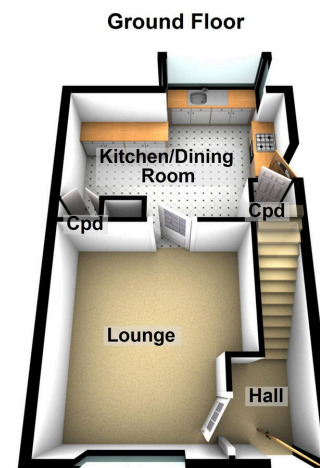
Lovely views over open farmland.

Contact us to arrange a viewing.









## Chadderton Office

509 Middleton Road,  
Chadderton, Oldham,  
OL9 9SH

chadderton@kirkham-property.co.uk  
t: 0161 626 5688