



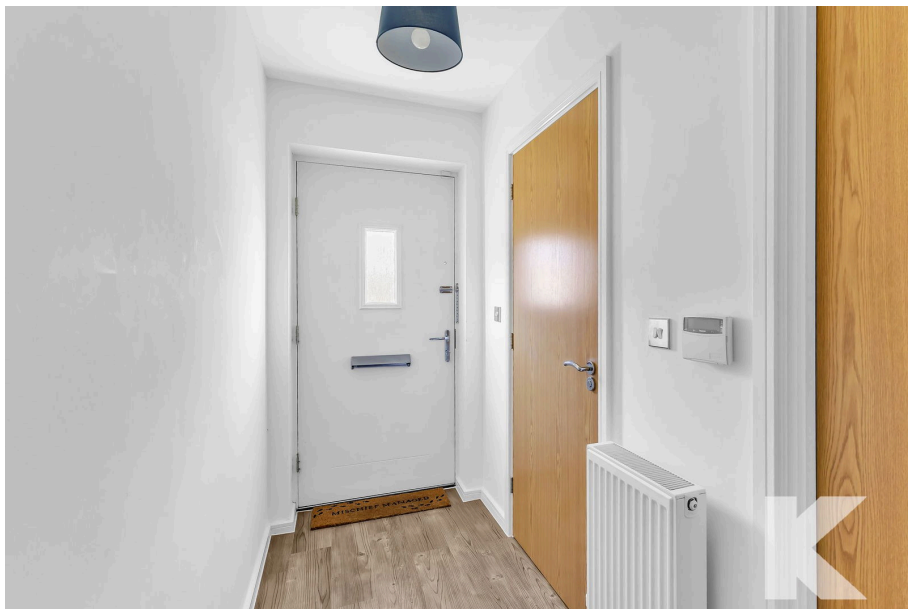
3 Moor farm Close, Chadderton , Oldham, OL9 9GL

£310,000

🛏 3 🚿 1 🚗 1



- Semi Detached
- Three Bedrooms
- Recently Built Development
- Ideal FTB or Young Family Home
- Immaculate Condition
- EPC - B



Beautifully presented and in move in condition is this immaculate three bedroom semi detached property. This is a modern property on a recently built development close to local amenities, transport links and only a short drive to the motorway network and is ideally suited to both first time buyers and young families alike. With a light and airy feel throughout internally the living space comprises entrance hallway, downstairs wc, lounge and beautiful modern kitchen diner with patio doors out onto the garden. Off the first floor landing there are three bedrooms (two doubles and a good size single) and a modern family bathroom. Externally the property has a driveway to the front providing off street parking and to the rear a lovely enclosed garden that isn't overlooked with a lawn and patio area. Viewing is recommended to appreciate this lovely home.



Chadderton Office

509 Middleton Road,
Chadderton, Oldham,
OL9 9SH

chadderton@kirkham-property.co.uk
t: 0161 626 5688