



# 10 Lime Grove, Royton

Offers In Region Of £229,950

🛏️ 3 🚗 1 🛋️ 2



- Semi-Detached House
- Three Bedrooms
- Driveway & Garage
- Conservatory
- Convenient Location to Royton Centre
- EPC Rating:



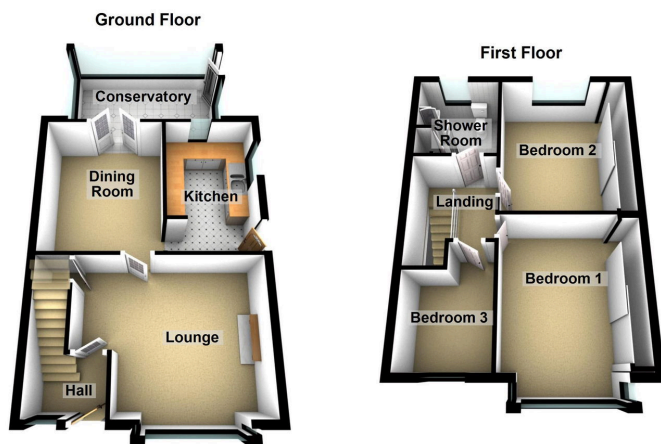
Offered for sale is this 1930's semi detached family home located in this popular spot in Royton.

Close to good quality local schools and amenities.  
Accommodation comprising: Entrance hallway, lounge, dining room, conservatory and a kitchen.

To the first floor there are three bedrooms and a shower room.

Externally there is an enclosed rear garden, driveway to the front and a garage to the rear.

Walking distance to Royton centre. Contact us today to arrange a viewing.



**Chadderton Office**

509 Middleton Road,  
Chadderton, Oldham,  
OL9 9SH

chadderton@kirkham-property.co.uk  
t: 0161 626 5688