




Mountside, Stanmore, HA7

£2,300PCM (Deposit: £2,653)

 3  1  1



Tax Band: D Furnished: Unfurnished

An unfurnished three bedroom semi-detached house with one living room, kitchen / diner, family bathroom / wc and good size rear garden. Located off Kenton Lane within close walking distance to local shops, pub / restaurant and Stanmore Golf Course.

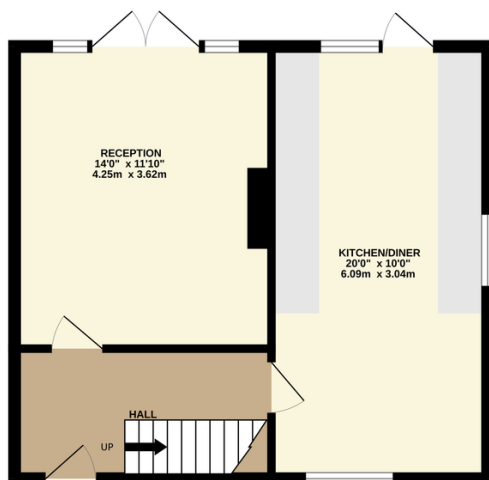
Transport links on Kenton Lane to Hatch End, Stanmore and Harrow.

EPC Rating: C.

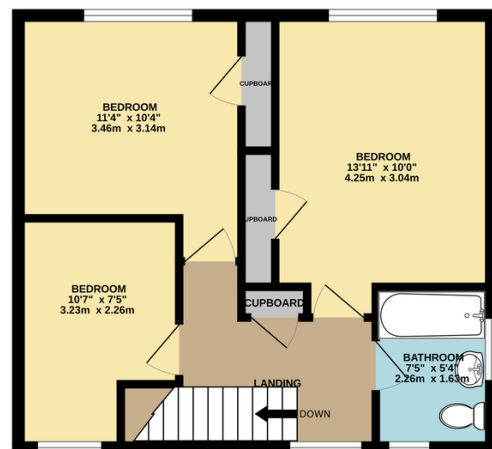
Key Features

- Unfurnished
- One reception room
- Bathroom / wc
- Double glazed
- Available now
- Three bedrooms
- Kitchen / diner
- Good size rear garden
- Gas central heating
- Parking available on road

GROUND FLOOR
433 sq.ft. (40.2 sq.m.) approx.



1ST FLOOR
436 sq.ft. (40.5 sq.m.) approx.



TOTAL FLOOR AREA : 869 sq.ft. (80.8 sq.m.) approx.

Whilst every attempt has been made to ensure the accuracy of the floorplan contained here, measurements of doors, windows, rooms and any other items are approximate and no responsibility is taken for any error, omission or mis-statement. This plan is for illustrative purposes only and should be used as such by any prospective purchaser. The services, systems and appliances shown have not been tested and no guarantee as to their operability or efficiency can be given.
Made with Metropix ©2024