




Kenton Lane, Belmont, Harrow, HA3

£635,000

 4  3  2

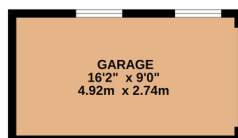
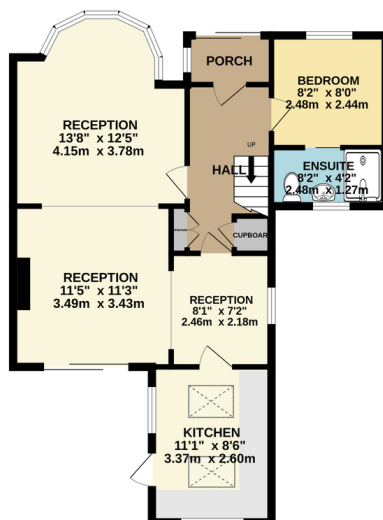


A CHAIN FREE, EPC rating B, four bedroom, three bathroom, end of terrace house situated on a corner plot with a good size detached garage to the rear of the 75' south west facing rear garden. The property provides good size flexible family accommodation, with the ground floor providing the fourth bedroom with ensuite modern shower room / wc and the first floor with three bedrooms and two shower rooms / wc. Multiple, roof mounted, solar panels feed directly to the grid resulting in a substantial yearly income which offsets energy usage charges.

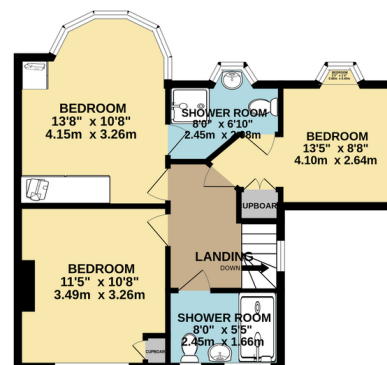
Key Features

- Four bedrooms
- Corner plot
- EPC Rating: B
- Detached garage
- Close to local primary schools
- Three shower rooms / wc
- Chain free
- Plenty of solar panels
- Off street parking
- Close to Belmont Circle shops

GROUND FLOOR
765 sq.ft. (71.1 sq.m.) approx.



1ST FLOOR
490 sq.ft. (45.6 sq.m.) approx.



TOTAL FLOOR AREA: 1256 sq.ft. (116.7 sq.m.) approx.

Whilst every attempt has been made to ensure the accuracy of the floorplan contained here, measurements of doors, windows, rooms and any other items are approximate and no responsibility is taken for any error, omission or mis-statement. This plan is for illustrative purposes only and should be used as such by any prospective purchaser. The services, systems and appliances shown have not been tested and no guarantee as to their operability or efficiency can be given.
Made with Metropix ©2024