

Abbey Road, Wymondham, Norfolk, NR18 9BB

Offers In Region Of £550,000

5 4 2

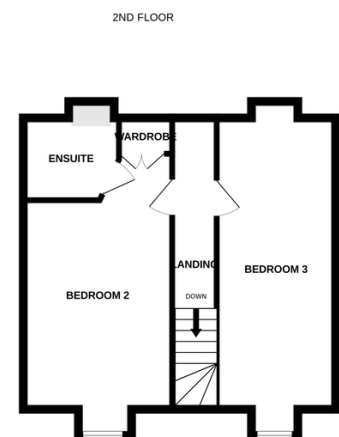
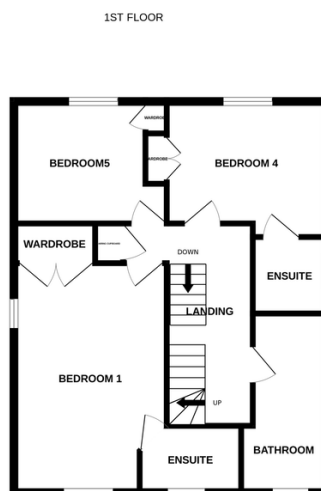
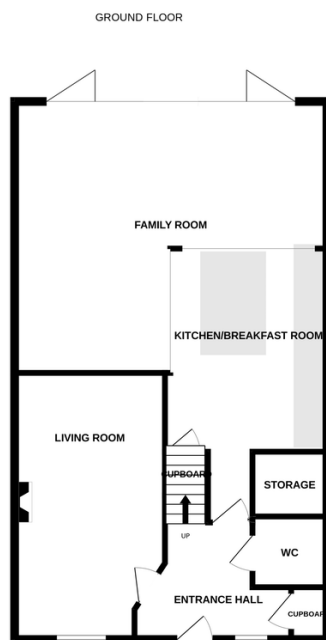


This spacious and immaculately presented five bedroom, five bathroom, three reception room, detached family home in the popular market town of Wymondham offers everything a growing family could need. The standout open plan kitchen/family room spans over 40ft, featuring a central island, modern appliances, skylights,, and a cosy log burner, perfect for family life and entertaining with the bi-fold doors seamlessly blending the beauty of the outdoors with the warmth and the comfort of the indoors.

Tenure: Freehold EPC: C Council Tax: E

Key Features

- Beautifully extended five bedroom detached house over three floors with two reception rooms
- The ground floor offers a 40ft kitchen / family room with bi fold doors
- There are two further bedrooms and an en suite on the third floor
- There is a garage and drive way parking for two / three cars
- Walking distance from regular bus and rail services to Norwich and Cambridge
- Offering a spacious 1980 sq ft of living space and sitting on a plot 90ft x 40ft
- The second floor offers three bedrooms / two en suite and family bathroom
- The rear wildlife garden has been naturally landscaped with seating areas a pond and natural grass
- The property is ideally placed for easy access to the main A11 for those commuting to work
- See our full online listing for further details including flood risk, broadband speed and other material information.



Whilst every attempt has been made to ensure the accuracy of the floorplan contained here, measurements of doors, windows, rooms and any other items are approximate and no responsibility is taken for any error, omission or mis-statement. This plan is for illustrative purposes only and should be used as such by any prospective purchaser. The services, systems and appliances shown have not been tested and no guarantee as to their operability or efficiency can be given.
Made with Metropix ©2025