

## New North Road, Attleborough, NR17

Offers In Region Of £475,000

3 2 1



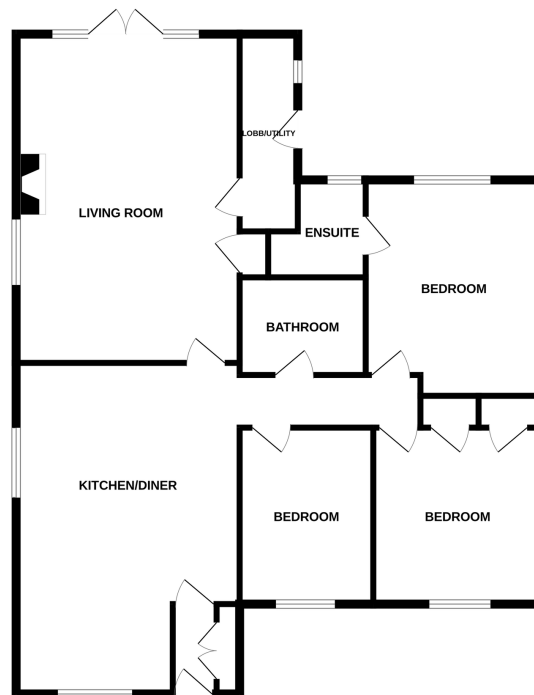
Moneyproperties are delighted to bring to market this immaculately presented three-bedroom detached bungalow occupying a generous plot and within walking distance to the local railway station and town centre with all its amenities. The property boasts character and charm throughout and comprises of a stylish 22ft open plan kitchen/dining room, generous living room with feature fireplace, three double bedrooms with an ensuite to bedroom one and a family bathroom. To the outside the property really comes into its own with a spacious shingle driveway to the front, double garage, and a large rear garden spanning approximately 138ft.

Tenure: Freehold EPC: D Council Tax: D

## Key Features

- Immaculately presented three double bedroom detached bungalow
- Stylish and modern 22ft open plan kitchen/diner
- Ensuite to bedroom one
- 138ft enclosed rear garden (stms)
- Must be viewed to fully appreciate.
- Occupying a generous plot approximately 1/3 of an acre
- Generous living room with feature fireplace and french doors to the rear garden
- Double garage with ample off-road parking
- Walking distance to the local train station and town centre
- See our full online listing for further details including flood risk, broadband speed and other material information.

GROUND FLOOR



Whilst every attempt has been made to ensure the accuracy of the floorplan contained here, measurements of doors, windows, rooms and any other items are approximate and no responsibility is taken for any error, omission or mis-statement. This plan is for illustrative purposes only and should be used as such by any prospective purchaser. The services, systems and appliances shown have not been tested and no guarantee as to their operability or efficiency can be given.  
Made with Metropix (2024)