

## Bosorne Street, St Just TR19

£235,000

2 1

An unusual find in St Just, so close to the town centre: a spacious two double bedroom barn conversion with outside space and parking - though the parking may be preferable as an extension to the existing outside space depending on your needs. This very well-proportioned home is a fantastic find and is brought to market in excellent order with no onward chain.

- TWO DOUBLE BEDROOM BARN CONVERSION
- OFF STREET PARKING FOR ONE / FURTHER GARDEN
- COURTYARD GARDEN TO REAR
- READY TO MOVE IN / NO ONWARD CHAIN
- SHORT WALK TO TOWN CENTRE
- WET ROOM WITH SEPARATE WC



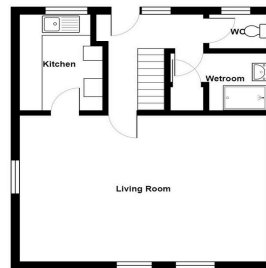
Floor Area: sq. ft.

Tenure: Freehold

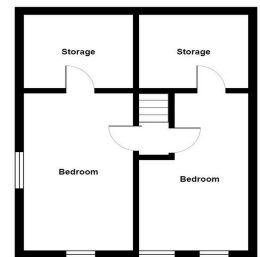
Service Charge: £ per annum

Ground Rent: £ per annum

Energy Efficiency Rating		
	Current	Potential
<i>Very energy efficient - lower running costs</i>		
(92 plus) <b>A</b>		
(81-91) <b>B</b>		87
(69-80) <b>C</b>		
(55-68) <b>D</b>		
(39-54) <b>E</b>	41	
(21-38) <b>F</b>		
(1-20) <b>G</b>		
<i>Not energy efficient - higher running costs</i>		
<b>England &amp; Wales</b>	EU Directive 2002/91/EC	



Ground Floor



First Floor

All measurements are approximate and for display purposes only