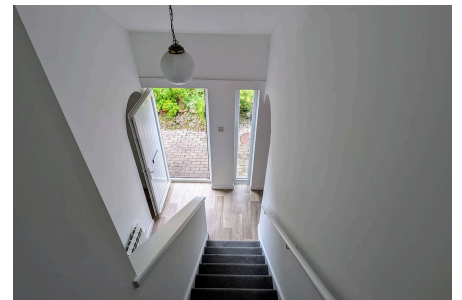
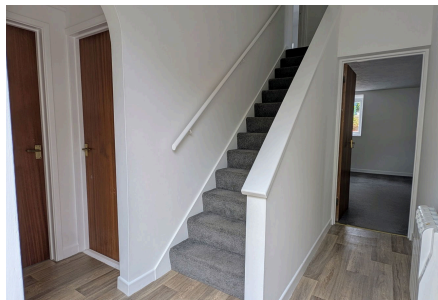




Bosorne Street, St Just TR19

£235,000

🛏 2 🚿 1 🚗 1

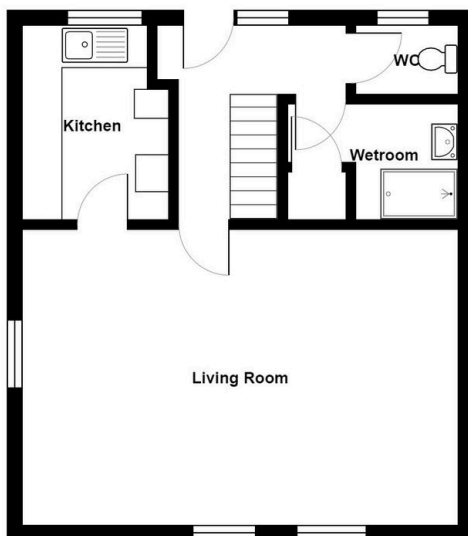


An unusual find in St Just, so close to the town centre: a spacious two double bedroom barn conversion with outside space and parking - though the parking may be preferable as an extension to the existing outside space depending on your needs. This very well-proportioned home is a fantastic find and is brought to market in excellent order with no onward chain.

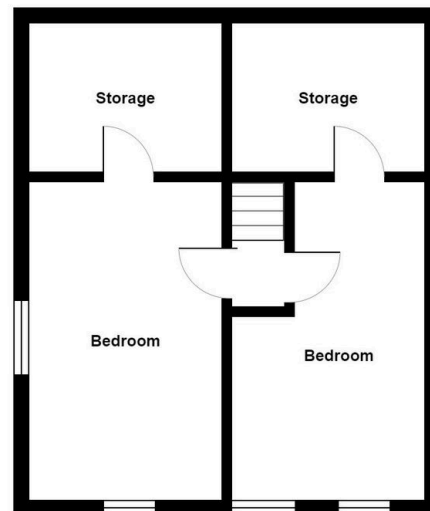


Key Features

- TWO DOUBLE BEDROOM BARN CONVERSION
- SMART, MODERN KITCHEN
- WET ROOM WITH SEPARATE WC
- READY TO MOVE IN / NO ONWARD CHAIN
- EPC - E
- OFF STREET PARKING FOR ONE / FURTHER GARDEN
- LARGE LIVING / DINING SPACE
- SHORT WALK TO TOWN CENTRE
- COURTYARD GARDEN TO REAR
- COUNCIL TAX BAND - B



Ground Floor



First Floor

All measurements are approximate and for display purposes only