



## Hillside Cottages, Trewellard TR19

£650,000

🛏️ 4 🚗 2 🛋️ 2



- DETACHED 4/5 BEDROOM HOME
- SET IN APPROX A THIRD OF AN ACRE
- OFF STREET PARKING FOR 4/5 VEHICLES
- AIR SOURCE HEAT PUMP POWERED HEATING

Set on an impressively large plot with sea views, is this energy efficient, reverse-level home with a stylish and contemporary finish. The property offers 4 or 5 double bedrooms, as well as an impressive first floor open-plan living space with bifold doors opening out to glorious sea views.



ANDREW  
EXELBY  
ESTATE AGENTS

Outside is a garden nearing a third of an acre that is mortly laid to lawn with off street parking for 4 or 5 cars.

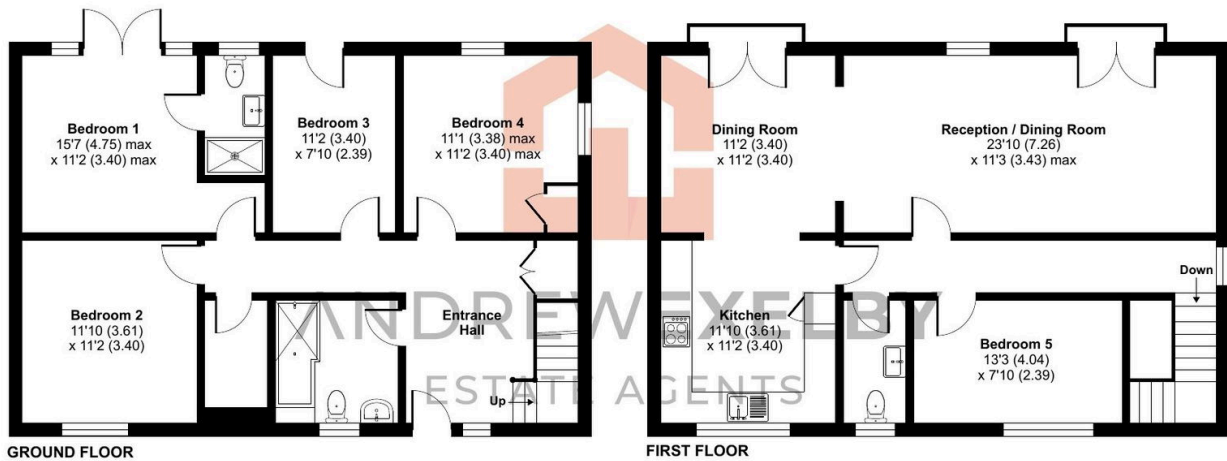



## Key Features

- DETACHED 4/5 BEDROOM HOME
- OFF STREET PARKING FOR 4/5 VEHICLES
- UNDERFLOOR HEATING THROUGHOUT
- MASTER BED WITH ENSUITE SHOWER ROOM
- EPC - B
- SET IN APPROX A THIRD OF AN ACRE
- AIR SOURCE HEAT PUMP POWERED HEATING
- REVERSE-LEVEL LIVING WITH SEA VIEWS
- PRESENTED IN EXCELLENT ORDER
- COUNCIL TAX BAND - D

## Trewellard, Pendeen, Penzance, TR19

Approximate Area = 1668 sq ft / 154.9 sq m  
For identification only - Not to scale



 Floor plan produced in accordance with RICS Property Measurement 2nd Edition, Incorporating International Property Measurement Standards (IPMS2 Residential). © nchecom 2024. Produced for Andrew Exelby Estate Agents. REF: 1207689