

Evesham Road, Astwood Bank, Redditch B96 6AY

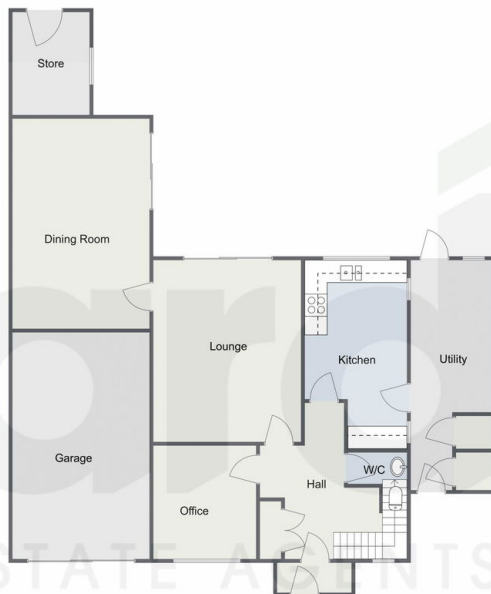
Offers Over £495,000

3 1 3

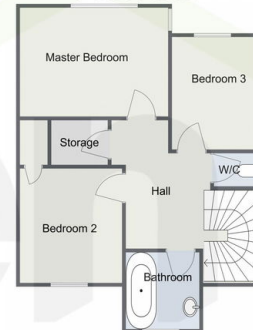


- Extended Traditional Detached House
- Lounge, Dining Room and Office
- Bathroom with Separate WC and Guest WC
- Driveway and Garage
- No Upward Chain
- Three Well-Proportioned Bedrooms
- Breakfast Kitchen and Utility
- Extensive Rear Garden
- Views to Neighbouring Countryside
- Sought After Village Location

Evesham Road, Astwood Bank
Ground Floor



First Floor



Total Area Approx
162.2 Sq M
1,745.91 Sq Ft

For illustrative purposes only. Decorative finishes, fixtures & fittings do not represent the current state of the property. Measurements are approximate & not to scale. Floor Plans made using RoomSketcher.

A beautifully positioned three-bedroom extended traditional detached home, offered with no upward chain, located in the heart of the highly sought-after Astwood Bank village. While the property would benefit from some internal modernisation, it offers well-proportioned accommodation throughout. Externally, it boasts an extensive rear garden with open views of the surrounding countryside, ample off-road parking set back from the main road, and a garage.