

**Knights Way, St. Ives, PE27 6TB**

Guide Price £475,000

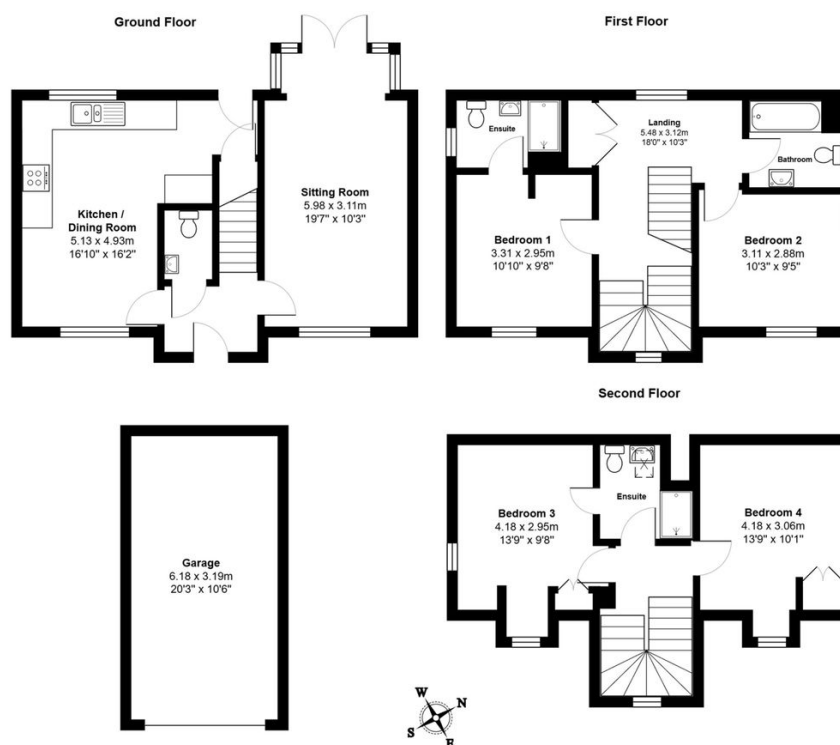
4 4 1



**Dream Family Find!** This stunning four-bed detached in St Ives offers perfect modern living with its flowing spaces, including a fabulous kitchen/diner and three double bedrooms, main with ensuite. Add a beautiful garden and prime location near schools and commuter links - could this be your perfect next move?

## Key Features

- Stunning Four Bed Detached Home In Prime Location
- Practical Utility and Downstairs W.c
- En-Suite To Main Bedroom
- Modern Home With Up To Date Fittings
- Virtual Tour Available Upon Request
- Double Aspect Living Room With Direct Garden Access
- Four Well Proportioned Bedrooms (Three doubles)
- Well Maintained Private Garden
- Walking Distance Of Primary / Secondary Schools And A Vast Amount Of Leisure Facilities
- EPC Rating: B/83



Total Area: 121.7 m<sup>2</sup> ... 1310 ft<sup>2</sup> (excluding garage)

All measurements are approximate and for display purposes only