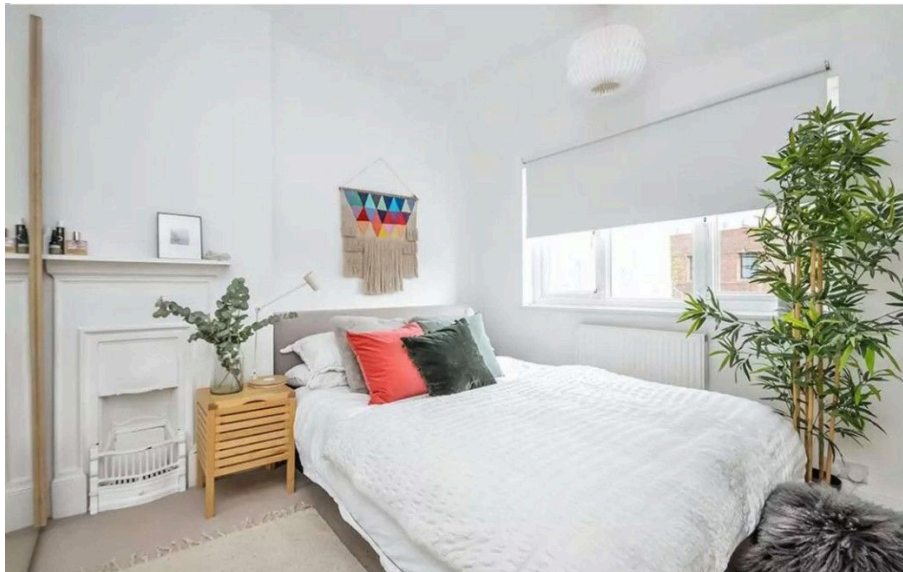




Toby Gullick
INDEPENDENT PROPERTY SPECIALIST

8 Swan Lane,
Guide Price £675,000

3 3 3

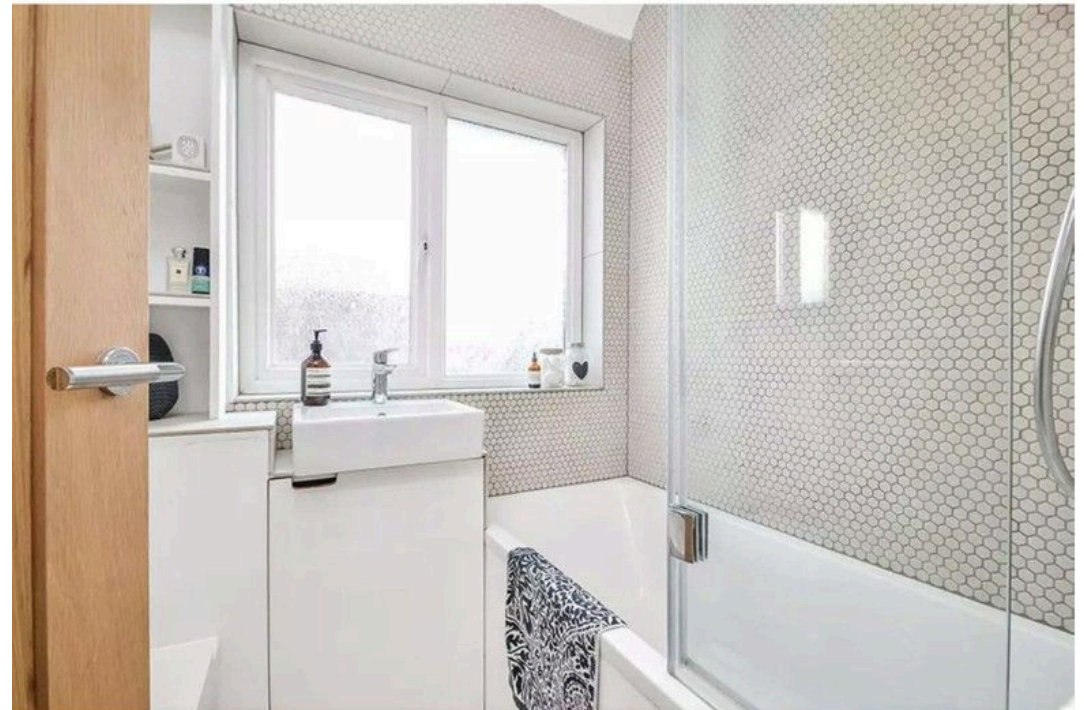


A SUPERB AND STYLISHLY MODERNISED 3 BEDROOM VICTORIAN TERRACED HOME IN THE HEART OF WINCHESTER

This beautifully presented and contemporary three bedroom Victorian terraced house blends timeless character with modern luxury, offering high-end finishes, stylish design, and an enviable location, very centrally positioned in Winchester City Centre, just a short walk from the train station. Within St Bede and Westgate Primary Schools and Westgate secondary school catchment area. Step inside to a stylish sitting room, where elegant décor and period charm create an inviting space to relax. A separate cosy study retreat provides a perfect nook for reading, working from home, or quiet reflection.

At the heart of the home is a stunning, architecturally designed kitchen extension, expertly crafted to maximise space and light. This exceptional area features a large central island with bar seating, sleek cabinetry, and generous room for a second seating area, all beneath a striking skylight that floods the room with natural light, ideal for both entertaining and family living. A downstairs WC adds convenience to the ground floor. To the rear, a welcoming family room provides flexible space, perfect as a playroom, snug, or additional lounge.

Upstairs, you'll find three beautifully appointed bedrooms, each offering unique character and charm. Bedrooms one and two feature attractive original fireplaces, adding warmth and period detail. A delightful family bathroom completes the upper floor with tasteful fittings and a serene feel. **GARDENS AND PARKING** Outside, the rear garden offers a beautifully designed and private outdoor retreat. A charming paved patio area directly off the kitchen is ideal for al fresco dining, morning coffee, or summer entertaining. From the patio, step down to a neatly manicured lawn bordered by mature planting and greenery, providing both colour and privacy. The garden feels like a natural extension of the living space, tranquil, enclosed, and thoughtfully landscaped, offering a perfect setting for children to play, gardening, or simply unwinding in the sunshine.





- A Superb and Stylish Terraced Property
- Three Characterful Bedrooms
- Modern Family Bathroom
- Stylish Sitting Room
- Architecturally Designed Stunning Kitchen Extension
- Original Fireplaces In Bedrooms 1 & 2
- Versatile Rear Family Room
- Secluded Rear Garden With Patio Area
- Prime Central Winchester Location
- Within St Bede And Westgate Primary Schools And Westgate Secondary School Catchment Area.

