



HEARTWOOD
HOMES

Richmond Walk, St. Albans, AL4 9BA

£275,000

1 1 1



Step out the front door, and you're greeted by nature, with Jersey Farm open space literally at your doorstep and the huge benefit of its own south-facing rear garden.

This fantastic ground-floor maisonette is nestled in the highly sought-after Jersey Farm area, it's conveniently close to a range of local amenities, including Tesco, a dentist, doctor's surgery, and excellent road connections. Plus, St. Albans City Centre, with all its vibrant charm, is just a short distance away.

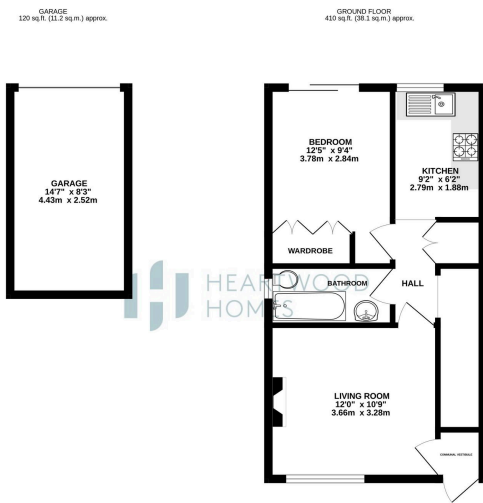
Inside, you enter through a communal hallway, shared only with the upstairs maisonette, leading to a bright living room with lovely views of green open space. A hallway with ample built-in storage leads you through to a modern kitchen that overlooks the garden.

The property features a well-sized double bedroom, offering direct access to a beautifully landscaped and well-maintained garden—a perfect spot to relax. There's also a modern bathroom, complementing the home's fresh, inviting appeal.

Outside, the south-facing garden is an ideal space for summer barbecues and gatherings. Additional benefits include a garage en bloc.

This superb maisonette is rarely available and truly offers fantastic value. To arrange a viewing of this wonderful home, give us a call today!





TOTAL FLOOR AREA: 530 sq ft. (49.2 sq m.) approx.

Whilst every effort has been made to ensure the accuracy of the floor plan, Heartwood Homes, its agents, and its representatives do not accept any liability for any errors or omissions. The floor plan is a guide only and should not be used as a basis for any legal proceedings. The floor plan and specifications shown may not be used for any other purpose without the prior written consent of Heartwood Homes.

- Step out the front door, and you're greeted by nature, with Jersey Farm Woodland Park
- Ground floor step-out rear garden
- Modern kitchen overlooking the garden
- Convenient garage en bloc
- Close to local shops, Tesco, and St. Albans City Centre
- South-facing, private landscaped rear garden
- Bright living room with views of green space
- Spacious double bedroom
- Modern bathroom with fresh appeal
- EPC Grade C



Energy Efficiency Rating		
	Current	Potential
<i>Very energy efficient - lower running costs</i>		
(92 plus) A		
(81-91) B		
(69-80) C	72	74
(55-68) D		
(39-54) E		
(21-38) F		
(1-20) G		
<i>Not energy efficient - higher running costs</i>		
England & Wales	EU Directive 2002/91/EC	



01727 638333 | hello@heartwood-homes.co.uk | heartwood-homes.co.uk

Follow us on Facebook, Instagram & LinkedIn @heartwoodstateagents