



Your Logo

10 Granary Halt, Rayne

Offers Over £290,000

🛏️ 2 🚿 1 🚗 1

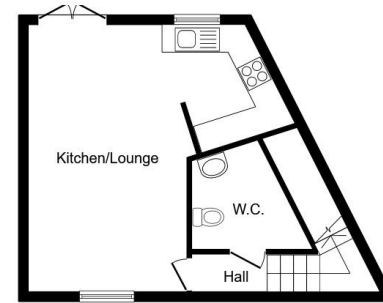
- Two bedroom house
- Ideal for first time buyers
- Sought after village location
- Open planned living
- Allocated parking for two vehicles
- Downstairs cloakroom
- Family bathroom with bath and separate shower
- Well maintained and private rear garden
- Quiet and peaceful setting
- The Flich Way within close proximity



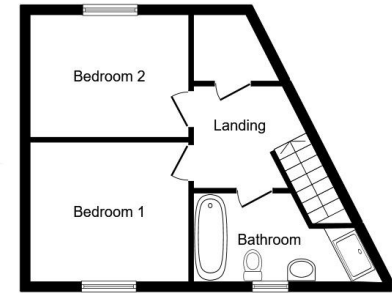
PERFECT FOR FIRST TIME BUYERS

Located in the ever popular village of Rayne is this charming two bedroom terraced house, boasting open planned living and allocated parking!





Ground Floor



First Floor

This floor plan is for illustrative purposes only. It is not drawn to scale. Any measurements, floor areas (including any total floor area), openings and orientations are approximate. No details are guaranteed, they cannot be relied upon for any purpose and do not form any part of any agreement. No liability is taken for any error, omission or misstatement. A party must rely upon its own inspection(s). Powered by www.Propertybox.co

