



Your Logo



## Flat 18, 1, Rectory Lane

Guide Price £220,000

🛏 1 🚿 1 🚗 1

- One bedroom apartment
- Ideal for first time buyers
- City centre location
- Walking distance to Chelmsford train station
- Modern specification throughout
- Well presented throughout
- Shops and restaurants within close proximity
- Open planned living

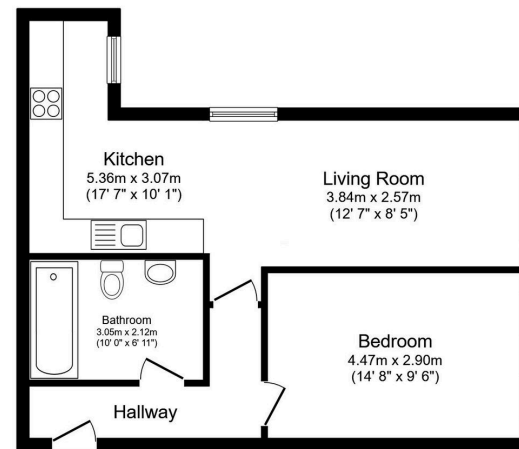


\*\*\*NEW TO MARKET\*\*\*

Perfect for first time buyers is this well presented one bedroom apartment. Located in the heart of Chelmsford, everything you need is just a stones throw away!







Floor Plan

This floor plan is for illustrative purposes only. It is not drawn to scale. Any measurements, floor areas (including any total floor area), openings and orientations are approximate. No details are guaranteed, they cannot be relied upon for any purpose and do not form any part of any agreement. No liability is taken for any error, omission or misstatement. A party must rely upon its own inspection(s). Powered by www.Propertybox.io



Energy Efficiency Rating		
	Current	Potential
<i>Very energy efficient - lower running costs</i>		
(92 plus) <b>A</b>		
(81-91) <b>B</b>	83	83
(69-80) <b>C</b>		
(55-68) <b>D</b>		
(39-54) <b>E</b>		
(21-38) <b>F</b>		
(1-20) <b>G</b>		
<i>Not energy efficient - higher running costs</i>		
<b>England &amp; Wales</b>	EU Directive 2002/91/EC	