



Your Logo

23 Deerleap Way

Offers Over £450,000

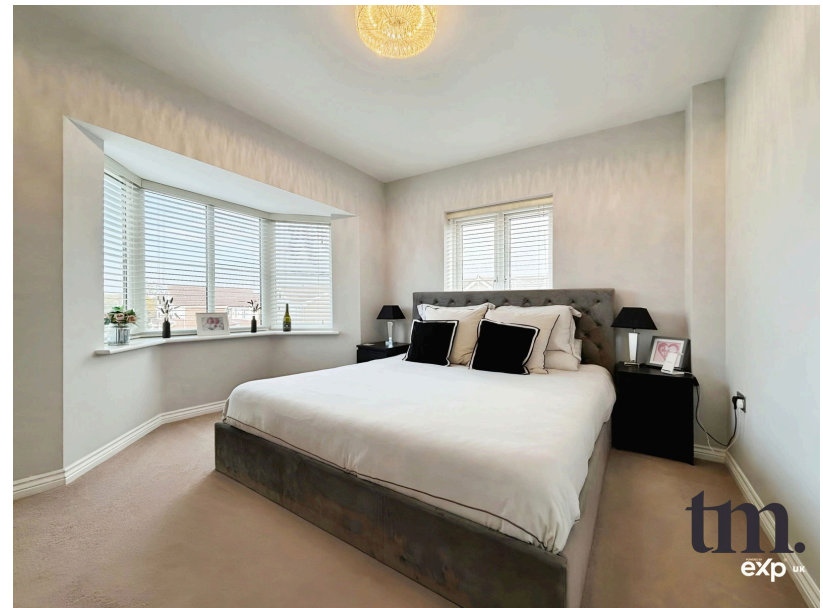
🛏️ 4 🚿 2 🛋️ 1

- Detached four bedroom family home
- Open planned kitchen/diner
- Highly desirable location
- Car port and driveway for two vehicles
- Well maintained and private rear garden
- Completed onward chain
- Beautifully presented main bedroom with dressing room
- Good schools and local amenities nearby
- Spacious living room
- Downstairs cloakroom



*****COMPLETED ONWARD CHAIN*****

This four bedroom detached family home is located on the sought after Kings Park development in Braintree, has an open planned kitchen/dining area and contemporary design throughout!





Ground Floor

Floor area 59.0 m² (635 sq.ft.)



First Floor

Floor area 48.2 m² (518 sq.ft.)



Second Floor

Floor area 47.0 m² (506 sq.ft.)

TOTAL: 154.2 m² (1,660 sq.ft.)

This floor plan is for illustrative purposes only. It is not drawn to scale. Any measurements, floor areas (including any total floor area), openings and orientations are approximate. No details are guaranteed, they cannot be relied upon for any purpose and do not form any part of any agreement. No liability is taken for any error, omission or misstatement. A party must rely upon its own inspection(s). Powered by www.Propertybox.io

