

Your Logo

## Church Lane, Braintree, CM7 5SB

Guide Price £425,000

4 2 2

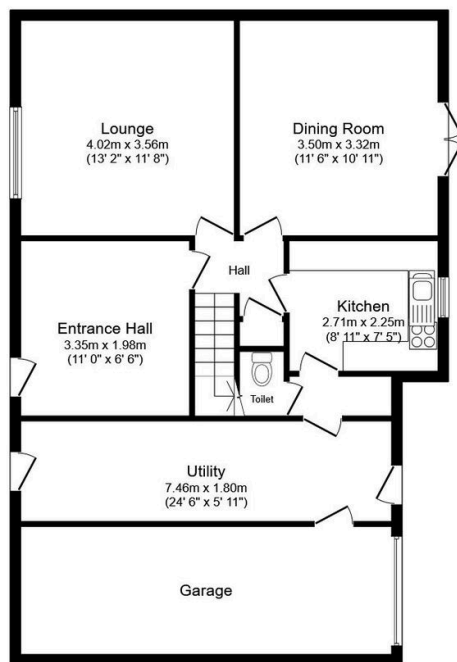


GUIDE PRICE £425,000-£450,000

This generously sized four bedroom semi-detached house is situated on Church Lane in Bocking. Located within a short drive to Braintree, the property benefits from off street parking and garage.

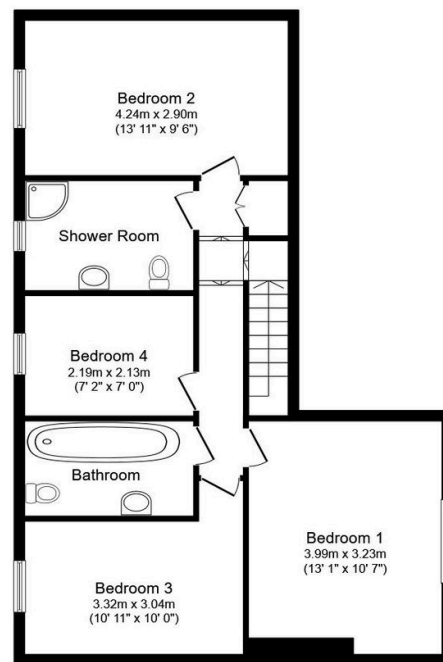
# Your Logo

- Semi-detached house
- Large rear garden
- Driveway for ample off street parking
- Garage
- Generous plot size
- Four bedrooms
- Impressive frontage
- Modernisation required
- Sought after location
- Utility room



**Ground Floor**

Floor area 101.7 m<sup>2</sup> (1,094 sq.ft.)



**First Floor**

Floor area 82.1 m<sup>2</sup> (883 sq.ft.)

**TOTAL: 183.7 m<sup>2</sup> (1,978 sq.ft.)**

This floor plan is for illustrative purposes only. It is not drawn to scale. Any measurements, floor areas (including any total floor area), openings and orientations are approximate. No details are guaranteed, they cannot be relied upon for any purpose and do not form any part of any agreement. No liability is taken for any error, omission or misstatement. A party must rely upon its own inspection(s). Powered by [www.Propertybox.io](http://www.Propertybox.io)