



Your Logo

## 21 Canon Road, Fitch Green

Offers Over £325,000

3 2 1

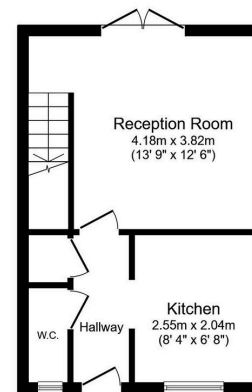
- Three bedroom house
- No onward chain
- Ideal first time buyer home
- En-suite to main bedroom
- Private rear garden
- Sought after location
- Allocated parking for two vehicles
- Downstairs cloakroom
- Flexible living space
- Close to good schools and local amenities



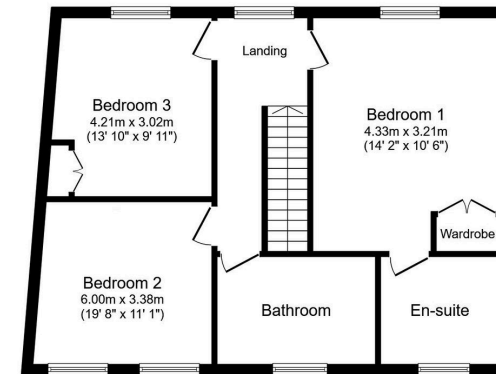
\*\*\*NO ONWARD CHAIN\*\*\*

Situated in the ever popular location of Fitch Green and having flexible living space is this three bedroom house, perfect for first time buyers and couples.





**Ground Floor**  
Floor area 30.7 m<sup>2</sup> (331 sq.ft.)



**First Floor**  
Floor area 61.8 m<sup>2</sup> (665 sq.ft.)

**TOTAL: 92.6 m<sup>2</sup> (996 sq.ft.)**

This floor plan is for illustrative purposes only. It is not drawn to scale. Any measurements, floor areas (including any total floor area), openings and orientations are approximate. No details are guaranteed, they cannot be relied upon for any purpose and do not form any part of any agreement. No liability is taken for any error, omission or misstatement. A party must rely upon its own inspection(s). Powered by www.Propertybox.io

