



11 Verden Close, Peverell, Plymouth, Devon, PL3 4BT

Offers Over £400,000



Set within the private, gated development of Verden Close, this townhouse combines striking contemporary design with thoughtfully planned spaces across three levels. Part of an exclusive collection of home, this semi-detached property offers both style and practicality in equal measure.

The ground floor centres around a generous kitchen and dining area that extends across the rear of the property. Designed for modern living, this space features sleek cabinetry, integrated appliances, and ample room for dining and entertaining. Underfloor heating enhances the sense of comfort, while French doors open onto a landscaped garden and patio, creating a seamless flow between indoors and outdoors. A cloakroom and integral garage are also positioned on this level.

The first floor provides a calm and versatile living area. At the rear, a spacious lounge stretches the full width of the house, enjoying natural light from large windows and offering access to a private balcony. To the front, a double bedroom is served by a contemporary family bathroom, making this level ideal for guests or as a home office space.

On the second floor, the principal suite occupies the majority of the floor and includes a stylish en-suite shower room and built-in storage. Two additional bedrooms are arranged at the rear, along with a separate WC on the landing.

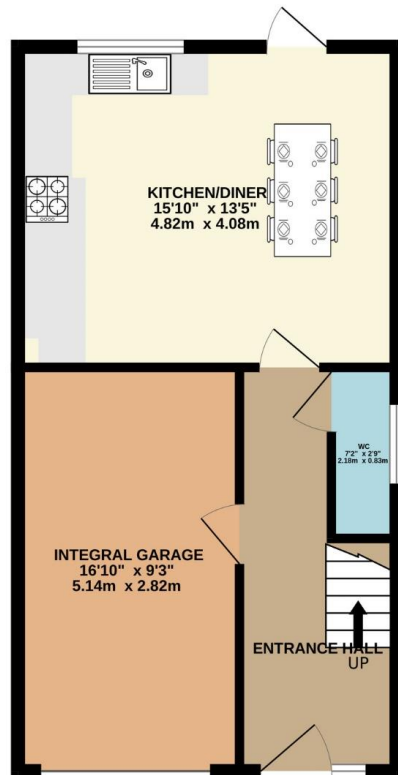
The property benefits from energy-efficient construction throughout, with underfloor heating adding to the sense of luxury and comfort.



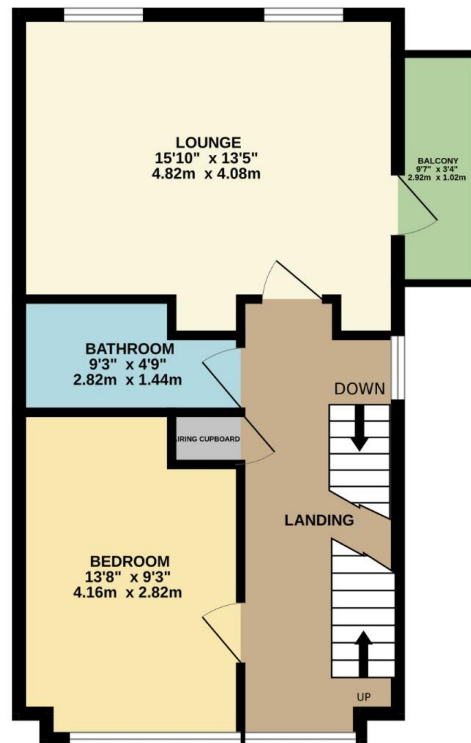
To view this property call Lang Town & Country Estate Agents on **01752 256000**.



GROUND FLOOR
478 sq.ft. (44.4 sq.m.) approx.



1ST FLOOR
475 sq.ft. (44.2 sq.m.) approx.



2ND FLOOR
475 sq.ft. (44.2 sq.m.) approx.



TOTAL FLOOR AREA : 1429 sq.ft. (132.7 sq.m.) approx.

Whilst every attempt has been made to ensure the accuracy of the floorplan contained here, measurements of doors, windows, rooms and any other items are approximate and no responsibility is taken for any error, omission or mis-statement. This plan is for illustrative purposes only and should be used as such by any prospective purchaser. The services, systems and appliances shown have not been tested and no guarantee as to their operability or efficiency can be given.
Made with Metropix ©2025

Lang Town & Country
6 Mannamead Road
Plymouth
PL4 7AA
Tel: 01752 256000
Email: property@langtownandcountry.com
www.langtownandcountry.com

Lang Town & Country endeavour to ensure the accuracy of property details produced and displayed, we have not tested any apparatus, equipment, fixtures, fittings or services and so cannot verify that they are connected, in working order or fit for purpose. A buyer must check the availability of any property and make an appointment to view before embarking on any journey to see a property.

