



LANG TOWN
& COUNTRY

16 Homer Park, Hooe, Plymouth, Devon, PL9 9NN

LANG TOWN
& COUNTRY
SALES

£370,000

A well-presented 3-bedroom bay-fronted semi-detached home, quietly positioned within a sought-after cul-de-sac in Hooe.

This delightful property offers spacious living accommodation, perfect for families. The entrance porch opens into a welcoming hallway, leading to a generous bay-fronted lounge with a charming feature fireplace. To the rear, the modern kitchen/diner flows seamlessly into a bright and spacious conservatory, creating an ideal space for entertaining or relaxing.

Upstairs, there are three bedrooms, including a sizeable principal bedroom with fitted wardrobes and far-reaching views. The family bathroom is fitted with a stylish four-piece suite, comprising a shower, bath, wash hand basin and W.C.

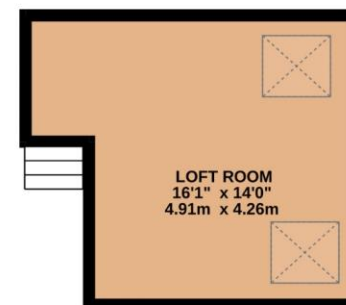
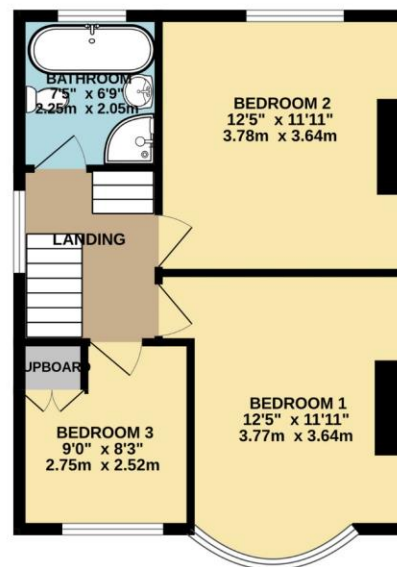
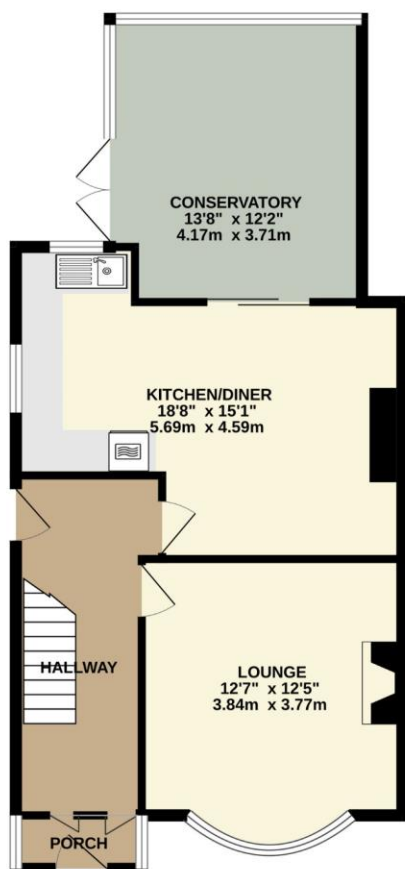
Externally, the property boasts a lawned front garden with mature shrubs and bushes, alongside a driveway providing ample off-road parking and access to the garage, which features an electric roller door, lighting and power. The enclosed south-facing rear garden enjoys a sunny aspect, with a patio seating area, lawn and deck—perfect for outdoor living.

Early viewing is highly recommended to appreciate the location and space this lovely home has to offer.



To view this property call Lang Town & Country Estate Agents on 01752 456000.





TOTAL FLOOR AREA: 1340 sq.ft. (124.5 sq.m.) approx.
Measurements are approximate. Not to scale. Illustrative purposes only
Made with Metropix ©2025



Lang Town & Country

6 The Broadway

Plymstock

Plymouth

PL9 7AU

Tel: 01752 456000

Email: plymstockoffice@langtownandcountry.com

Lang Town & Country endeavour to ensure the accuracy of property details produced and displayed, we have not tested any apparatus, equipment, fixtures, fittings or services and so cannot verify that they are connected, in working order or fit for purpose. A buyer must check the availability of any property and make an appointment to view before embarking on any journey to see a property.

