



Ian Anthony
The Estate Agents

Liverpool Road, Aughton, L39 3LW

Guide Price £325,000

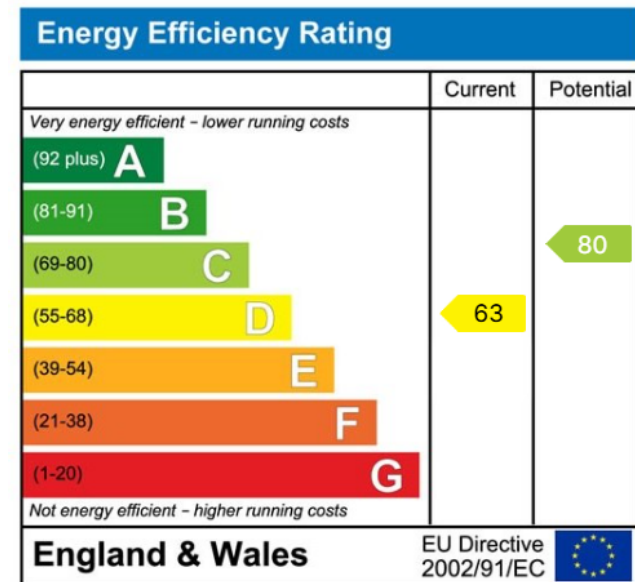
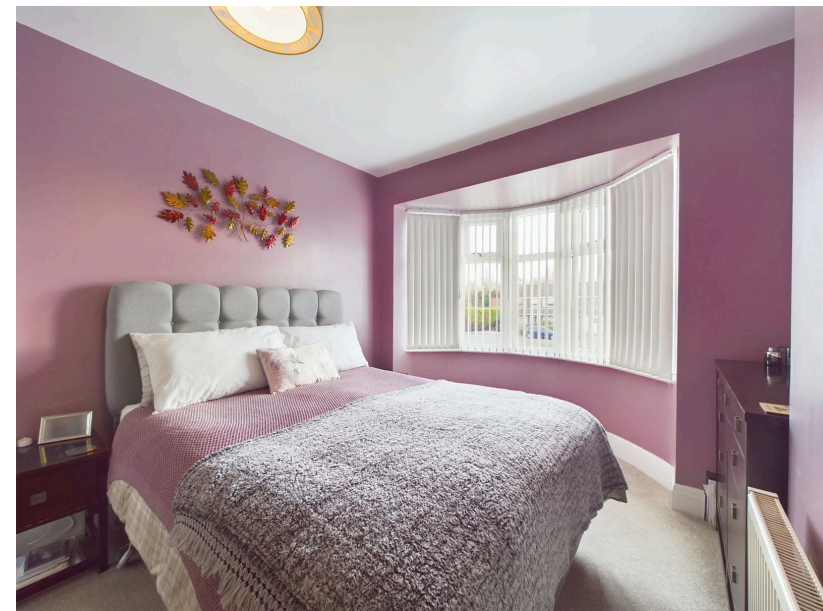
🛏️ 3 🚿 1 🚗 2



- AMAZING VIEWS OVER OPEN COUNTRY FIELDS
- GREAT LOCATION!
- THREE DOUBLE BEDROOMS
- LOFT CONVERSION
- CATCHMENT AREA FOR GREAT SCHOOLS
- TRAIN STATION NEARBY WITH DIRECT LINKS TO LIVERPOOL CITY CENTRE
- UTILITY
- TWO RECEPTION ROOMS
- GARAGE
- DRIVEWAY AND GARDEN



Introducing this delightful three-bedroom semi-detached family home on Liverpool Road, Aughton. Perfectly suited for families, this property is located in a prime area with excellent transport links, including a nearby train station offering direct routes to Liverpool city centre. It also falls within the catchment area of highly regarded schools, making it an ideal choice for those with children. One of the standout features of this home is the stunning open countryside views to the rear, offering a peaceful and picturesque backdrop to everyday life. The ground floor comprises a welcoming entrance hall leading to a spacious living room, a second versatile living space that doubles as a dining room, and a modern fitted kitchen, where you can enjoy uninterrupted views of the surrounding fields. A convenient utility room provides extra storage and functionality, while access to the integrated garage ensures practicality.



These particulars, whilst believed to be accurate are set out as a general outline only for guidance and do not constitute any part of an offer or contract. Intending purchasers should not rely on them as statements of representation of fact, but must satisfy themselves by inspection or otherwise as to their accuracy. No person in this firm's employment has the authority to make or give any representation or warranty in respect of the property.

5 Burscough Street, Ormskirk, Lancashire, L39 2EG

Tel: 01695 580888 Email: enquiries@iananthoniestates.co.uk <https://www.iananthoniestates.co.uk>