



Ian Anthony

The Estate Agents

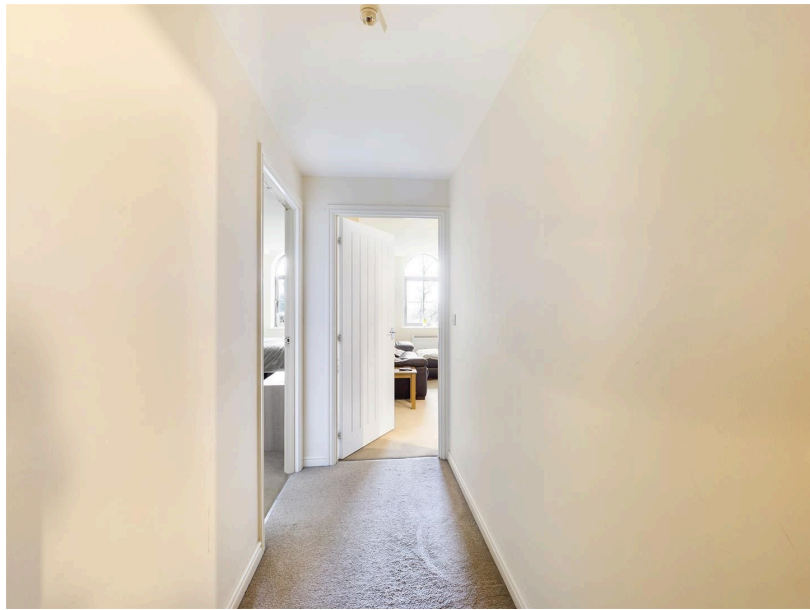
Ainscough Mill, Burscough, L40 5UX

Guide Price £179,950

🛏️ 2 🚿 2 🚗 1

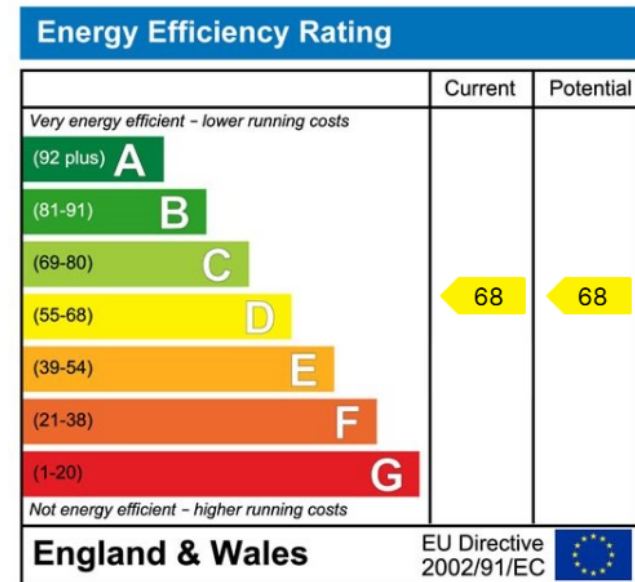
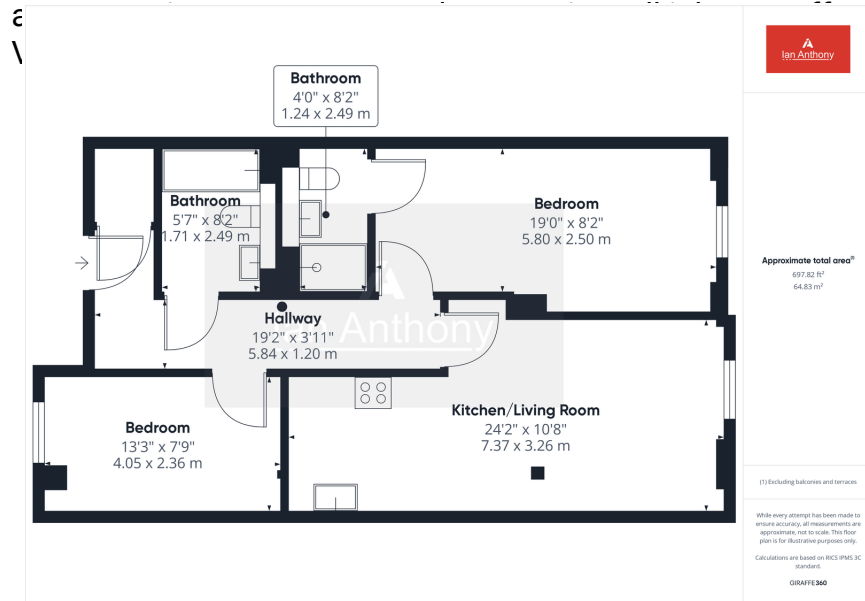


- NO CHAIN!
- EN SUITE ON MASTER BEDROOM
- ALLOCATED PARKING
- WALKING DISTANCE TO BURSCOUGH WHARF
- OPEN PLAN KITCHEN/ LIVING AREA
- TWO BEDROOMS
- PICTURESQUE VIEWS
- TRAIN STATION NEARBY WITH DIRECT ROUTE TO MANCHESTER



NO UPWARD CHAIN! Situated in the highly sought-after residential area of Burscough, this well-presented fourth-floor apartment offers spacious and versatile living in a prime location. The apartment's flexible layout has two bedrooms, complemented by an open-plan kitchen, dining, and living area, ideal for modern living. The property includes a stylish bathroom and an en-suite shower room, providing convenience and comfort.

Outside, residents benefit from an allocated parking space, additional visitor parking, and communal gardens, offering pleasant outdoor space. The complex overlooks the picturesque Leeds/Liverpool canal, enhancing the peaceful setting while being only a short walk from the lively Burscough Wharf with its array of shops, cafes, and entertainment. With its fantastic location, versatile layout, and beautiful views, this



These particulars, whilst believed to be accurate are set out as a general outline only for guidance and do not constitute any part of an offer or contract. Intending purchasers should not rely on them as statements of representation of fact, but must satisfy themselves by inspection or otherwise as to their accuracy. No person in this firm's employment has the authority to make or give any representation or warranty in respect of the property.

5 Burscough Street, Ormskirk, Lancashire, L39 2EG

Tel: 01695 580888 Email: enquiries@iananthonystates.co.uk <https://www.iananthonystates.co.uk>