

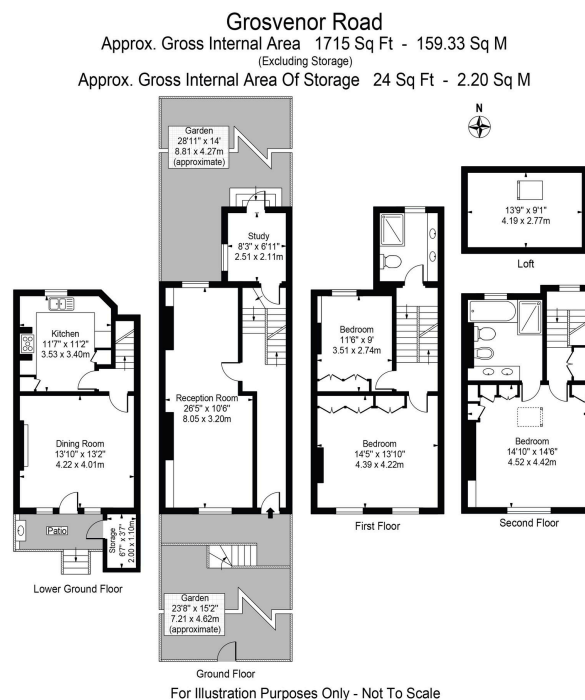
## Grosvenor Road, SW1V

Guide Price £1,500,000

🛏 3 🚿 2 🚗 2



- 3 double bedrooms and 1 study
- Incredible view over The River Thames
- Separate dining room
- Large principal bedroom with en-suite
- Loft for storage
- Period freehold house
- Separate kitchen with Miele appliances
- Double reception room with floor to ceiling window and original fireplace
- Private front and rear garden
- Prime location with excellent transport links



**Guide Price £1,500,000 to £1,750,000**

This delightful four-bedroom period house presents captivating views of the River Thames and overlooks Battersea Power Station. The property offers an excellent opportunity to purchase a special home in an incredible location. Spanning four floors, the accommodation features a spacious living room with access to the original veranda and panoramic Thames views, a double reception room with original feature fireplace and floor to ceiling windows. The house boasts a

kitchen/breakfast room and a separate dining room with garden access, three double bedrooms, separate study, and two bathrooms. With abundant outside space, both front and rear gardens enhance the appeal of the house.