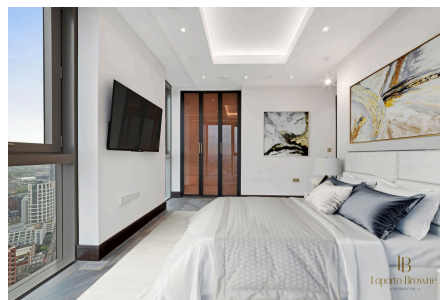


Valencia Tower, EC1V

Guide Price £3,250,000

🛏️ 3 🍽️ 4 🚗 2



Flat 212 in Valencia Tower is a luxurious 3-bedroom, 4-bathroom penthouse located in the prestigious 250 City Road development. This spacious residence includes 2 reception rooms, offering ample space for relaxation and entertaining in one of London's most desirable locations.

World-renowned architects Foster+Partners have collaborated with Berkeley Homes to create this pioneering development with its own distinct character.

Residents enjoy a 20-metre swimming pool, state-of-the-art gym, and extensive spa facilities as well as a 24 hour concierge. In the grounds, the central plaza is surrounded by 1.9 acres of

greenery, mature trees, and wildflower beds, sculpted by award-winning landscape architects Murdoch Wickham.

Key Features

- Offers Over: £3,500,000.
- 3 bed, 4 bathroom modern penthouse.
- Lots of natural light.
- 24 hour concierge.
- Fitness and well being gym on site.
- 3 lane swimming pool.
- Spa with jacuzzi, sauna and steam room.
- Business and residents lounge.
- Great transport links - Old Street, Angel and Farringdon
- Restaurants and retail nearby.



For Illustration Purposes Only - Not To Scale

This floor plan should be used as a general outline for guidance only and does not constitute in whole or in part an offer or contract.
 Any intending purchaser or lessee should satisfy themselves by inspection, searches, enquiries and full survey as to the correctness of each statement.
 Any areas, measurements or distances quoted are approximate and should not be used to value a property or be the basis of any sale or let.