

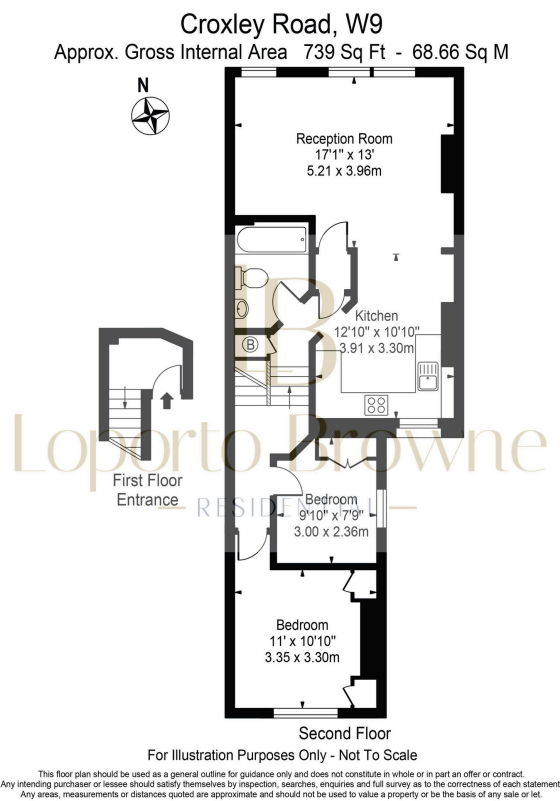
Croxley Road, W9

Guide Price £550,000

🛏️ 2 🚿 1 🚗 1



- Please contact Loporto Browne Residential to arrange a viewing at your earliest convenience
- Situated on the top floor of a Victorian conversion
- Spacious layout and period features
- Strong transport links with easy access to Queen's Park and Westbourne Park Tube stations
- Queen's Park a short stroll away
- GUIDE PRICE £500,000 to £550,000
- An exciting renovation opportunity
- Nestled between the sought-after areas of Maida Vale, Queen's Park, and North Kensington
- Sunday farmers' market in Queen's Park
- Offers a blank canvas in this sought-after location



This two-bedroom home, situated on the top floor of a Victorian conversion on Croxley Road, presents an exciting renovation opportunity. With its spacious layout and period features, it offers a blank canvas to create a home tailored to your personal taste.

Please contact Loporto Browne Residential to arrange a viewing at your earliest convenience.
GUIDE PRICE £500,000 to £550,000.