

31, Bridge Meadow, Lymm, WA13 9GH

Offers Over £450,000

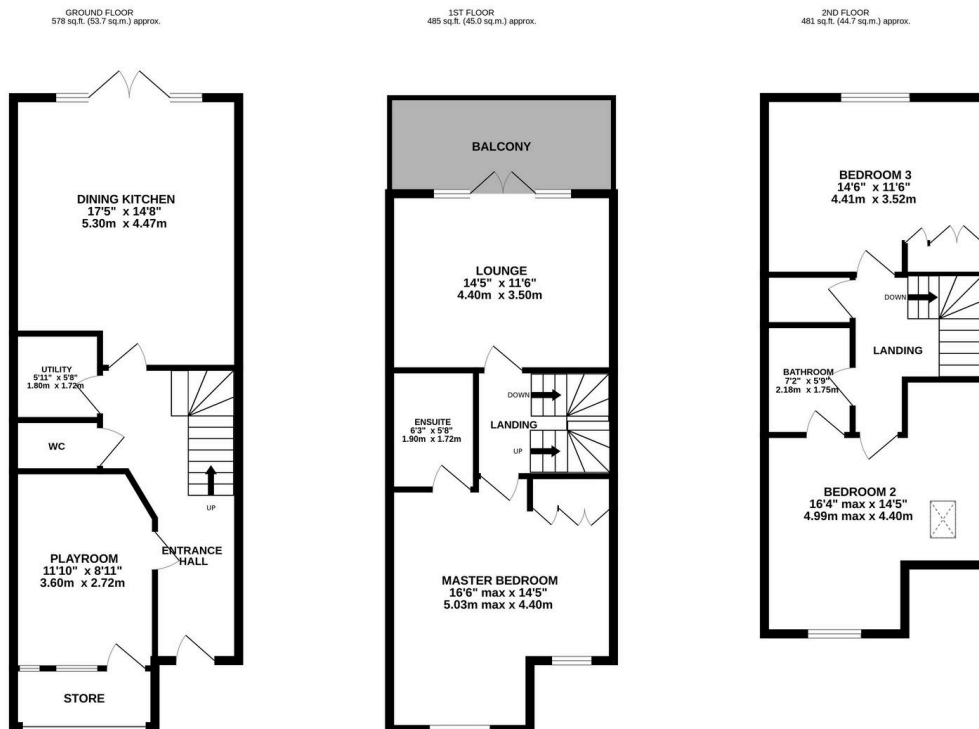
🛏 3 🚿 3 🚗 1



Beautifully presented and well maintained town house located on a small development and within easy walking distance of local amenities and Sandy Lane park. Having been occupied by the current owners from new the property offers ready to move into accommodation and early viewings are strongly recommended.

Key Features

- Immaculately presented townhouse
- Three double bedrooms, one with en suite shower room
- Separate Utility Room
- First floor Lounge with balcony overlooking the rear garden
- Lovely rear garden providing superb outdoor entertaining space
- Located on a small and well maintained development
- Spacious dining kitchen with direct access onto the rear garden
- Play Room
- Family bathroom
- Internal viewings are highly recommended to appreciate the quality fixtures and fittings throughout



TOTAL FLOOR AREA: 1544 sq.ft. (143.4 sq.m.) approx.

Whilst every attempt has been made to ensure the accuracy of the floorplan contained here, measurements of doors, windows, rooms and any other items are approximate and no responsibility is taken for any error, omission or mis-statement. This plan is for illustrative purposes only and should be used as such by any prospective purchaser. The services, systems and appliances shown have not been tested and no guarantee as to their operability or efficiency can be given.

Made with Metropix ©2024