

Roughlands Cottage, Warburton Lane, Lymm WA13 9TP

£600,000

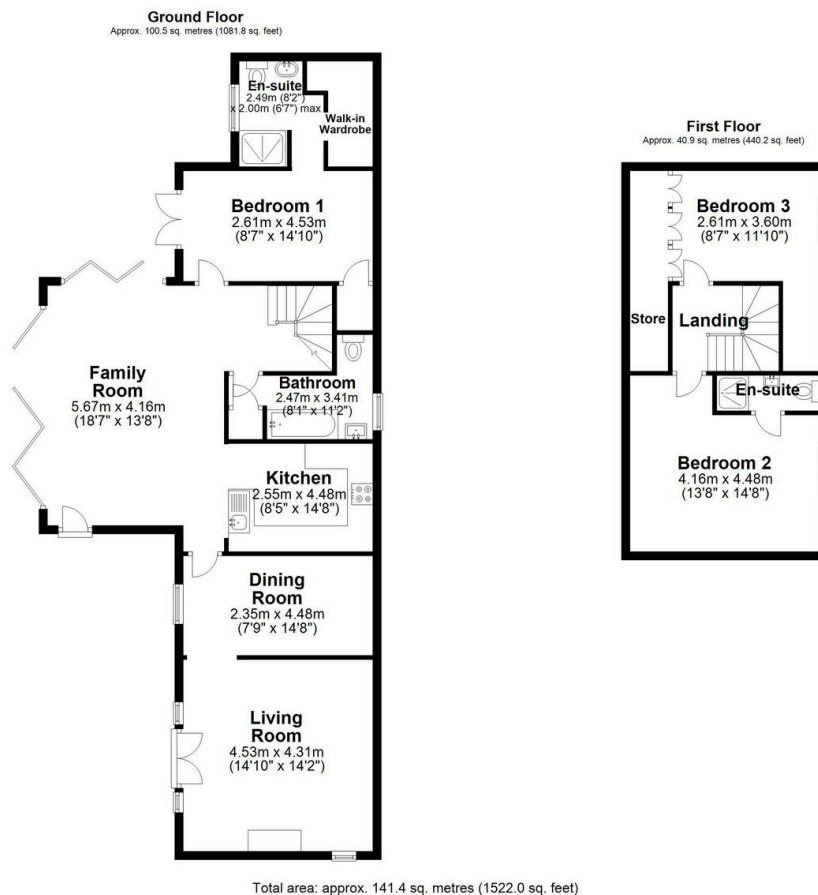
🛏️ 3 🚿 3 🚗 2



Delightful detached 3 bed converted barn with abundant character and in perfect move in condition. Situated on a generous sized plot and greatly benefitting from far reaching countryside views to all elevations. The interior of the property is a perfect match of modern, stylish rooms mixed with traditional features and rustic charm. Internal viewings highly recommended. No onward chain.

Key Features

- Detached, converted and extended barn on a generous sized, completely private plot
- Ground floor Master suite with walk in wardrobe and en-suite
- Modern and spacious family, dining kitchen
- Driveway parking for at least 4 vehicles
- Easy commuting distance to major motorway networks, Altrincham, Hale & Dunham Massey
- Surrounded by countryside with open views to all elevations
- Two further double bedrooms, one with en-suite
- Septic tank, mains gas and electricity supply
- Close to Lymm and local amenities
- NO CHAIN



Measurements of rooms and any other items are approximate and no responsibility is taken for any misstatement. This plan is for illustrative purposes only and should be used as such. Produced by Openinsight.co.uk
Plan produced using PlanUp.