


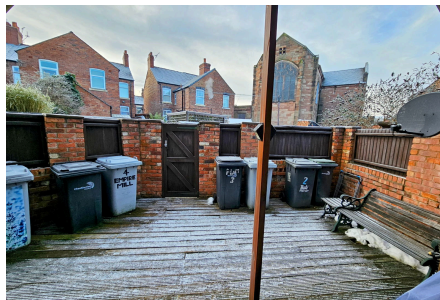
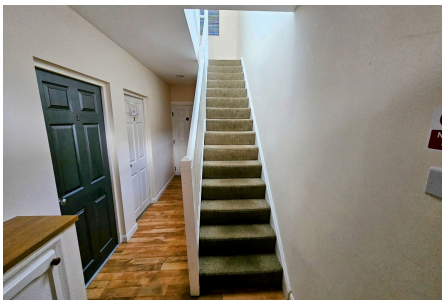


Empire Mill, Hall O'Shaw Street, CW1

Offers In Region Of £95,000

 1  1  1



Vetta Properties are delighted to bring to the market this superb 1 Bedroom Ground Floor Flat within walking distance to Crewe Retail Park. It is a fantastic opportunity for a first time landlord with a ready made tenant or First Time Buyer.

Call Vetta Properties to view 07980572963

Key Features

- Ground Floor Flat
- One Bedroom
- Newly Installed Ideal Combi Boiler
- Walking distance to Crewe Retail Park
- EPC Rating "C"
- 25ft Lounge/Dining Kitchen
- Large Shower Room
- Double Glazing
- Parking for small vehicle outside Flat
- Currently Tenant

