



Wistaston, CW2

Offers In Region Of £545,000



Wistaston, CW2

Vetta Properties are delighted to bring to the market this Characterful 1950's 4 Bedroom Detached House, set in a sought after location at the head of a lovely quiet Cul-de-Sac in Wistaston.

This property is not to be missed, the moment one enters this amazing home I am certain they will fall in love!

It has everything to offer a growing young family with an enormous amount of space inside and out! Generous Sitings Rooms, Family Kitchen, Garden Room, 4 Bedrooms with equally generous Family Bathrooms - Call Vetta Properties 07980572963





Storm Porch

Storm Porch with quarry tiled step leading to a sectional double glazed hardwood door inset within sectional double glazed hardwood panels to either side providing access to:

Reception Hall

Upon entering this wonderful Hall Way you will immediately note the feature wide staircase with quarter & three quarter turn to the landing an attraction of this 1950's Era dwelling.

All the doors are panelled with one door in particular that leads into the Kitchen being Stripped Pine with sectional multi-coloured lead glass.

This space boasts high quality Oak flooring, radiator & provides access from here to both Sitings Rooms, Extensive Dining Kitchen & Cloaks Room.



Cloakroom

1.87m x 1.33m (6'1" x 4'4")

Oak Flooring followed through from Hallway. Wash hand basin & Low Level W.C., & Panel door. This space is under the stairs and therefore runs deep enough for ample storage



Front Sitting Room

4.17m x 3.64m (13'8" x 11'11")

Lovely light airy room with large double glazed bay window & double glazed side window. This room has been beautifully decorated. Coving to ceiling, double radiator, panel door & feature wall mounted log effect electric fire.

Rear Sitting Room

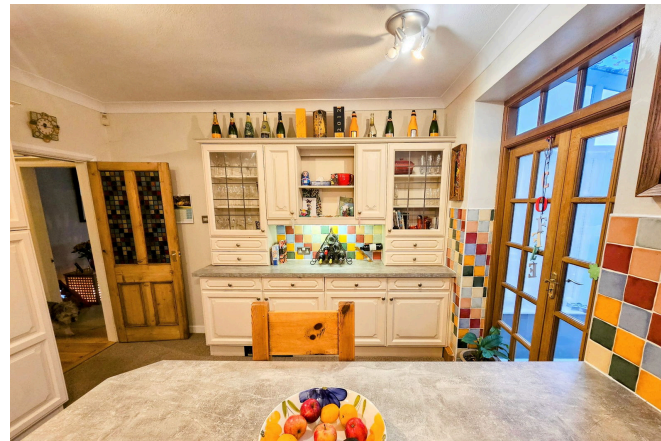
5.68m x 3.63m (18'7" x 11'10")

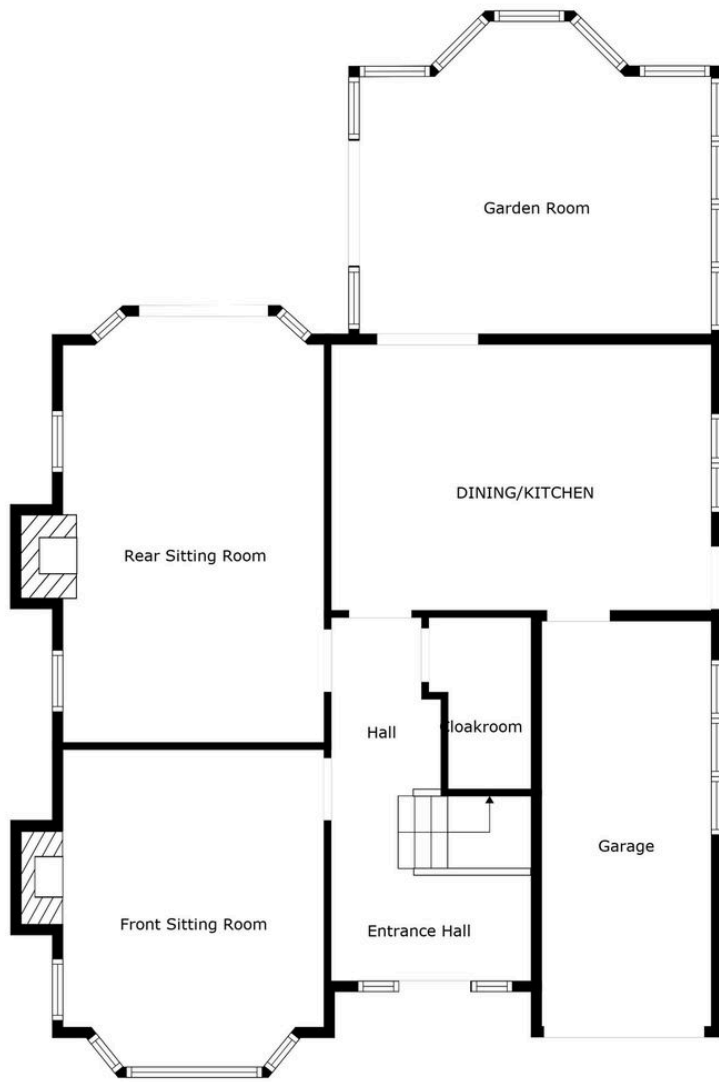
This is a glorious room overlooking the mature private garden you really can enjoy the splendor this space has to offer. Featuring Double glazed French Style doors and 2 double glazed window to side elevation. Adam style fire surround to open fire with inset marble & hearth, double radiator & panel door

Extensive Dining Kitchen

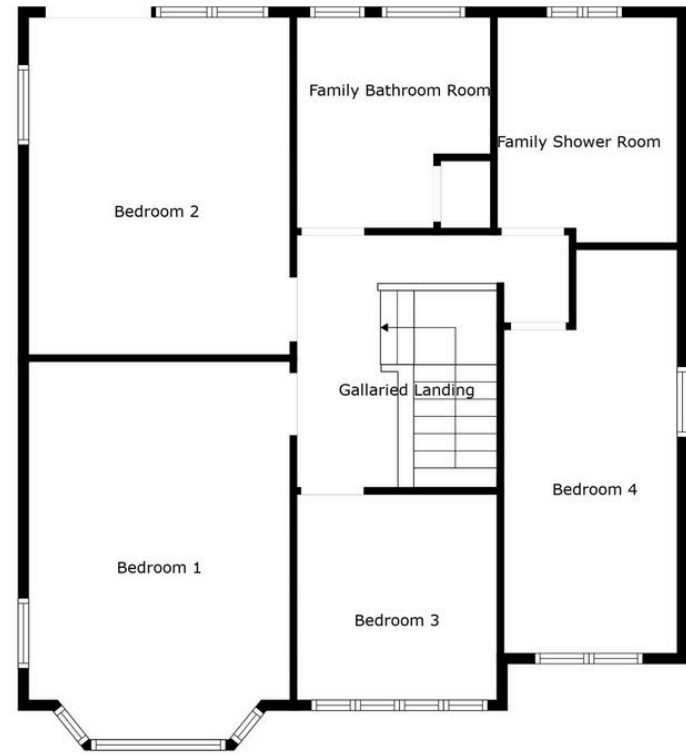
5.45m x 3.62m (17'10" x 11'10")

An amazing family gathering Dining Kitchen fully fitted with quality units comprising a good range of base and wall units with complimentary working surfaces which extends into a large Peninsular Dining Space. 1.5 sink bowl with mixer taps, gas ring hob with canopy extractor, Hotpoint double Electric Oven & integrated Fridge/ Freezer. Plumbing for automatic dishwasher. There is a gorgeous fitted display Dresser with inset glazing & lighting. Double glazed windows to rear and side elevation & feature stripped pine door with inset multi-coloured lead glazing leading to the exterior side of the property. There are spot lights and the room has a





Floor 1



Floor 2



Floor Plan Created By Cubicasa App. Measurements Deemed Highly Reliable But Not Guaranteed.

Tel: 07980 572 963

Email: toni.mortimer@vettaproperties.com

Web: www.vettaproperties.com

SOLD

