



Crowhurst Mead, Godstone, RH9 8BF

Guide Price £325,000

2 1 1



A generously sized first floor maisonette built over two levels, set in a private cul-de-sac within a short walk of Godstone village. Situated on the first and second floors, the property has a good sized living room and two bedrooms. Viewings are highly recommended.

ACCOMMODATION

A two bedroom maisonette set in an attractive private cul-de-sac within a short walk of Godstone village. The maisonette is arranged over two floors. A private front door leads to a small hallway with stairs to the first floor. A spacious living room with windows to the rear and side leads to the kitchen. The kitchen has a range of wall and base units, one and a half bowl sink with drainer, inset oven with hob, space for washing machine and fridge/freezer. There is a large window to the front and a good sized understairs cupboard. Up another flight of stairs to the second floor landing with a cupboard and access to the loft. There are two double bedrooms and a bathroom, with wash hand basin, bath with shower over, w.c. and Velux window. Outside the maisonette are plenty of shared parking spaces.

LOCATION

The property is situated in a quiet road in Godstone village. Godstone village offers a wide range of amenities including a village store with Post Office, convenience store, public houses, cricket ground and Primary School. For more comprehensive amenities, the towns of Redhill, Oxted and Caterham are all close by.

EDUCATION

State -

- Godstone Village School ages 3 to 11 years old,
- SWANS - Breakfast Club and After School Club.
- Oxted School 11 to 19 years old.

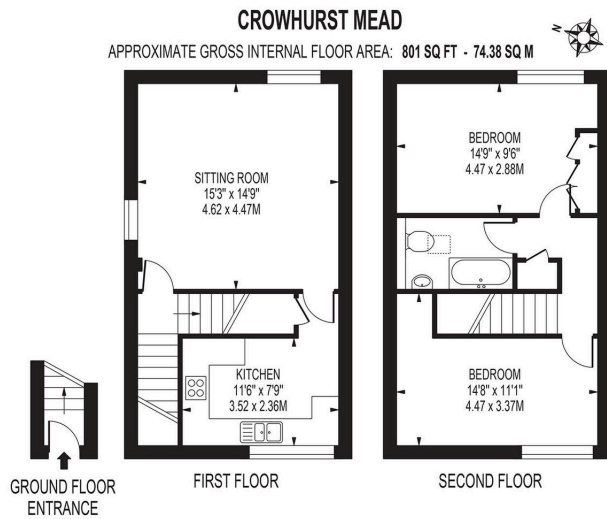
Independent -

- Caterham School 3 to 18 years old
- Hawthorns School & Nursery

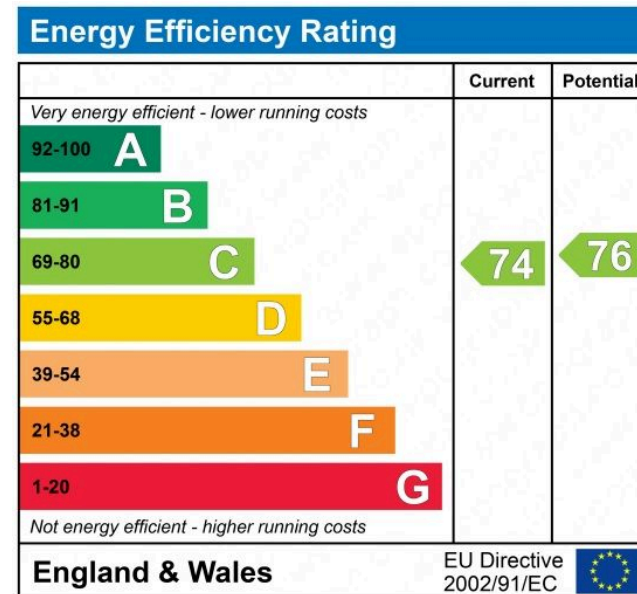
TRAVEL

Junction 6 is approximately 1.4 miles away providing easy access to the M25 and Gatwick airport. Oxted main line railway station provides fast trains to East Croydon (from 17 minutes) and London Bridge (from 33 minutes) and London Victoria (from 39 minutes). Godstone station is approximately 3.5 miles providing direct trains to Tonbridge (21 minutes) and Redhill (11 minutes).





- Spacious Maisonette
- Village Location
- Built in 1994
- Gas Central Heating with Radiators Throughout
- EPC Rating C
- 2 Double Bedrooms
- Private cul-de-sac
- Plenty of Shared Parking
- Service Charge £950 per annum
- Council Tax Band D



DISCLAIMER. PROPERTY MISDESCRIPTIONS. Whilst every attempt has been made to ensure accuracy of the property details, no responsibility is taken for error, omission or mis-statement. The Agent has not yet tested any apparatus, equipment, fixtures and fittings or services and so cannot verify that they are in working order or fit for the purpose. A buyer is advised to obtain verification from their Solicitor or Surveyor. References to the Tenure of a property are based on information supplied by the Seller. The agent has not had sight of the title documents

