

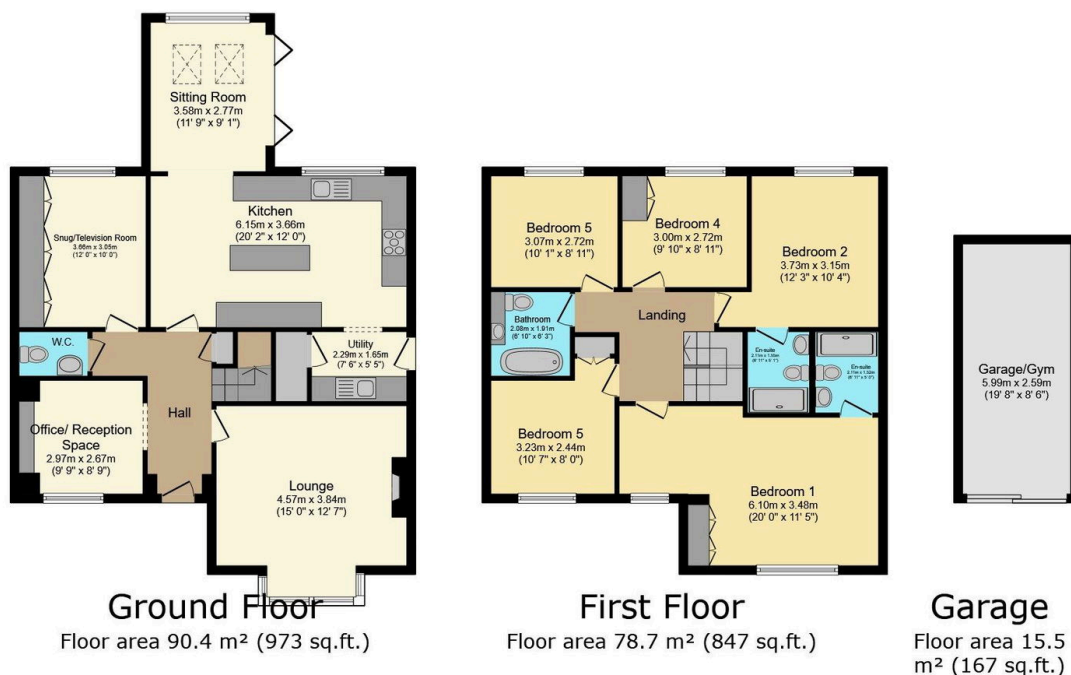
# 7 Crosbie Grove. Silverwoods, Stour Valley, Kidderminster

Guide Price £500,000

5 3 3



- Quote Reference PC0649.
- Extended and Decorated to an Excellent Standard
- Private Cul de Sac of Just Two Properties.
- Worcester side of Kidderminster
- Detached Garage Currently Set as a Gym
- Superb Five Bedroom Detached Family Home
- Woodland Views to the Front
- Amazing Kitchen Dining Room
- Increasingly Popular Location
- Hit the 'Request Details' or 'Email Agent' button to secure your viewing now!



TOTAL: 184.6 m<sup>2</sup> (1,987 sq.ft.)

This floor plan is for illustrative purposes only. It is not drawn to scale. Any measurements, floor areas (including any total floor area), openings and orientations are approximate. No details are guaranteed, they cannot be relied upon for any purpose and do not form any part of any agreement. No liability is taken for any error, omission or misstatement. A party must rely upon its own inspection(s). Powered by www.Propertybox.io

Quote Reference PC0649. Hit the 'Request Details' or 'Email Agent' button to secure your viewing now! Modern five bedroom detached family home with garage and driveway, two ensuite shower rooms and a refitted family bathroom. Comprising entrance hallway, lounge, study/reception room, T.V snug room, downstairs cloakroom, stunning extended dining kitchen, utility room, five bedrooms, two en-suites and family bathroom. Situated on a private cul de sac of just two properties, on the Stour Valley, Silverwoods development to the Worcester side of Kidderminster

and having many local amenities on the doorstep. The property also benefits from having gas central heating, double glazing, garage (currently used as a gym) and off road parking. Hit the 'Request Details' or 'Email Agent' button to secure your viewing now!