



HEATHER PORTER

exp[®] UK

@heather.porter@exp.uk.com

heatherporter.exp.uk.com

07811 129 251

Poplar Close

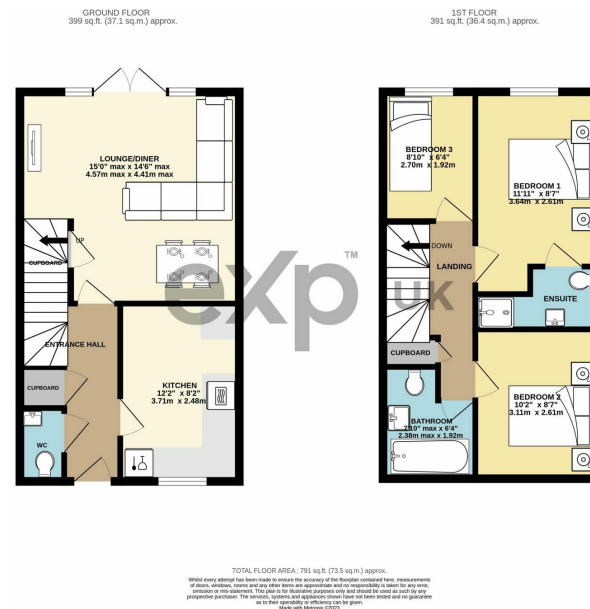
£295,000

3 2 1



- EXCEPTIONALLY WELL PRESENTED SEMI DETACHED HOME
- KITCHEN/BREAKFAST ROOM WITH INTEGRATED APPLIANCES
- MASTER EN-SUITE, FAMILY BATHROOM & CLOAKROOM
- DRIVEWAY PARKING FOR TWO VEHICLES
- NHBC WARRANTY REMAINING
- LARGE LOUNGE/DINING ROOM WITH PATIO DOORS TO THE REAR GARDEN
- THREE BEDROOMS
- LARGER THAN AVERAGE SOUTH FACING REAR GARDEN
- GAS CH, DOUBLE GLAZING
- QUOTE HP0686 TO VIEW





We are delighted to present to the market this exceptionally well presented semi detached home located within the Redwood Heights development in Plympton. Constructed in 2018 the property is completed to a high specification to include a modern high gloss kitchen with integrated appliances. We highly recommend an internal inspection to appreciate the size and standard of accommodation available.

