

whiteley helyar



830 ft²



2 bedrooms



bathroom



allocated
parking space

Guide Price £500,000

31 Connaught Mansions, Great Pulteney Street, Bath, BA2 4BP

DESCRIPTION

A spacious and elegant apartment (with lift access and secure gated parking) on the first floor of this impressive Grade I Listed building, directly on Great Pulteney Street and occupying a highly sought after and most convenient position just a few minutes level walk from the city centre.

ACCOMMODATION

2 bedrooms
living room
large useful storage cupboard
private parking space behind an electric gate

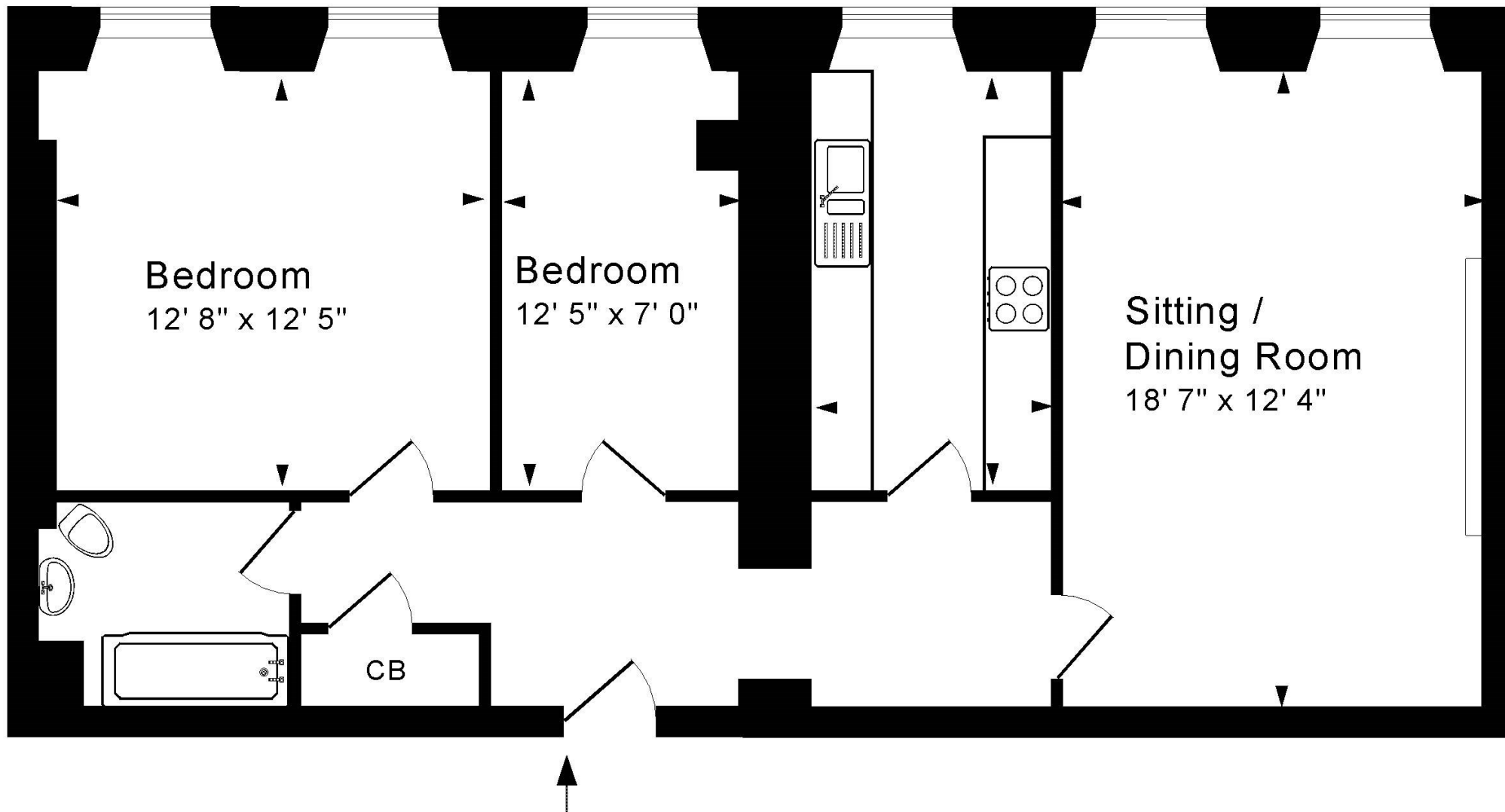
bathroom
kitchen
communal reception room
shared bicycle store

LOCATION

The property occupies a prime position in one of the most prestigious streets in the city, within very easy level walking distance of the vast number of shops, restaurants and other amenities that the centre of Bath has to offer. Sydney Gardens and Henrietta Park are close by, as is the Recreation Rugby Ground and Bath Spa Railway Station, whilst delightful walks along the Kennet and Avon Canal are also near at hand.







First Floor

Approx. Gross Internal Floor Area 830 Sq. Ft. / 77 Sq. M

Includes Conservatories. Excludes Garages, Porches etc. unless stated

For identification purposes only. Not to scale. Copyright Jemesis Ltd 2024

Drawing Number: 172-0794

Flat 31, Connaught Mansions, Great Pulteney Street, Bath, BA2 4BP.

Tenure: 999 from 1979
Ground Rent: Not collected
Service charge: £2,090.83 six monthly
Council tax band: 'E' = 2,575.27

