

whiteley helyar



3,650 ft²



7 double
bedrooms



7 bathrooms



permit
parking

Guide Price £1,500,000

Hill House, 25, Belvedere, Bath, BA1 5ED

Offering over 3,600 square feet of beautifully presented accommodation and retaining a number of delightful features this imposing end of terrace Georgian town house has been completely remodelled to a high specification creating a stylish bed and breakfast and offers potential for conversion back into a beautiful family home with relative ease if desired.

ACCOMMODATION

entrance hall	separate laundry room
sitting room	cloakroom
dining room	seven double bedrooms
stylish kitchen	seven en-suite shower rooms
utility room	including a self contained apartment on the lower ground floor

EXTERNALLY

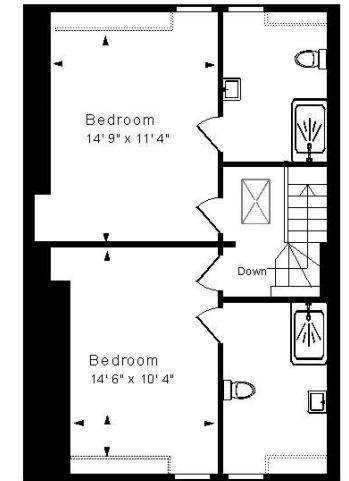
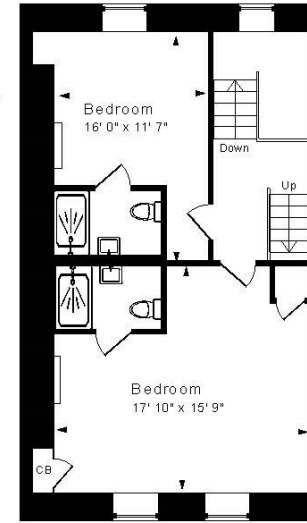
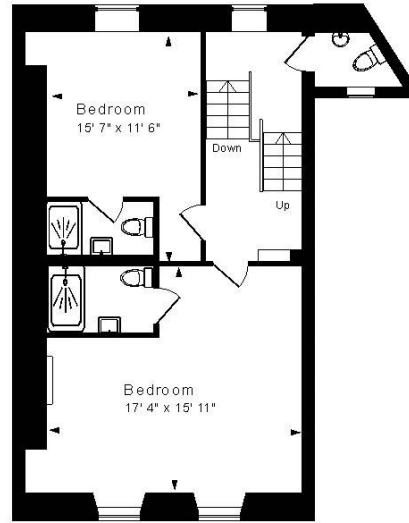
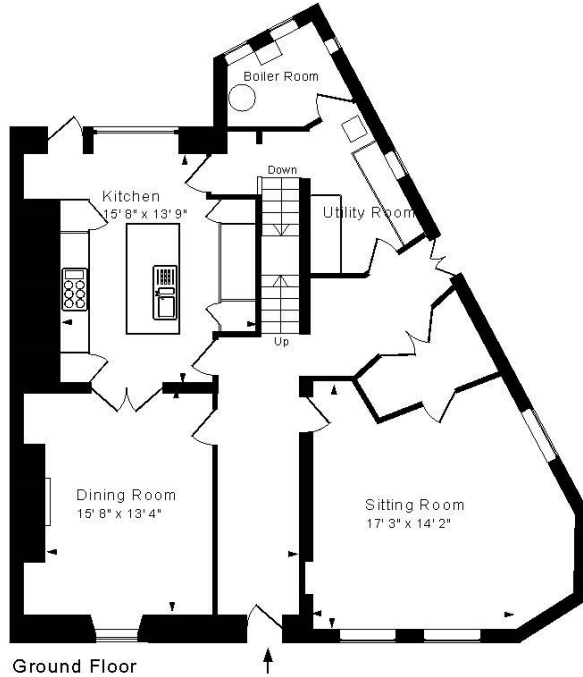
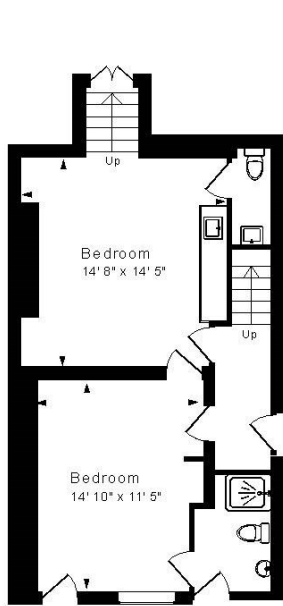
There is delightful walled courtyard garden planted with pleached hornbeam trees laid to a 'Millboard' composite deck a perfect (non slip) space for entertaining

LOCATION

Hill House occupies a splendid position in the centre of Bath. It is also most conveniently placed, being close to Hedgemoad Park and just a short walk from the many shops, restaurants, Bath Spa Railway Station and other amenities in the heart of the city. Swift access to the M4 is also available without having to cross Bath.







Approx. Gross Internal Floor Area 3,650 Sq. Ft. / 339 Sq. M
 Includes Conservatories. Excludes Garages, Porches etc, unless stated
 For identification purposes only. Not to scale. Copyright Jemess Ltd 2024
 Drawing Number: 172-0793
 Hill House, 25 Belvedere, Bath, BA1 5ED.

Tenure: Freehold
Business Rates: £3,112.26 PA

