



MARCO HARRIS
THE PROPERTY PROFESSIONALS

Bucklers Lodge, Anchorage Way, Lymington, SO41

Guide Price £285,000

2 1 1



Welcome To Anchorage Way! A beautiful home directed to the over 55's market. Set within close proximity of the High Street, this townhouse has been finished to an exceptional standard throughout. Offering a stunning kitchen/ diner, lounge with garden views, two fantastic bedrooms and a refitted shower room. The positioning of this home is exceptional, with all your needs covered on the doorstep. This is a beautiful home, or perfect lock up and go.

The story of this charming home begins as you step through the front door into a welcoming entrance hall. Here, warm wood flooring greets you, and the staircase rises to the first-floor landing. From the hall, doors open to the reception room, kitchen, and a convenient cloakroom WC.

Useful Additional Information

Tenure: Leasehold 94 Years Remain

Local Council: New Forest District Council Band D

Windows: Double Glazed

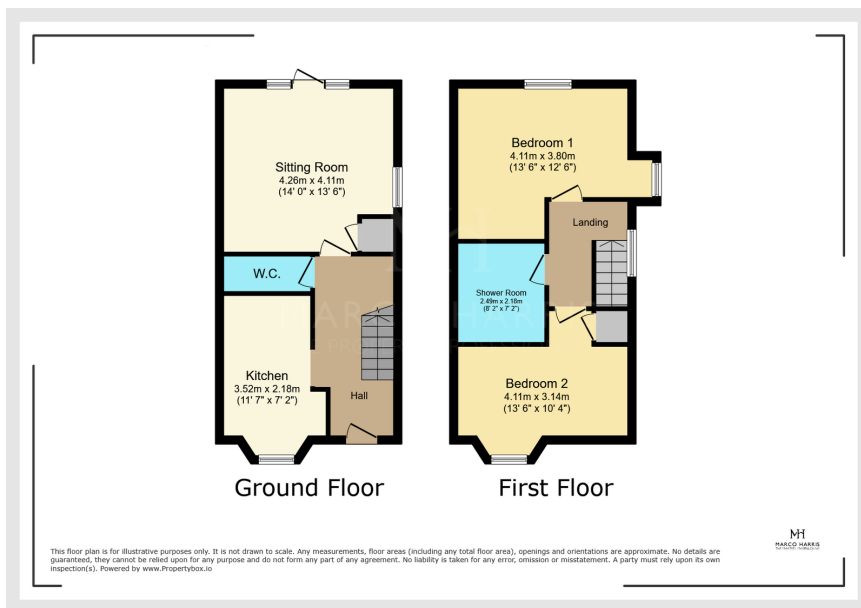
Ground Rent & Maintenance: £2500 All In Per Annum TBC

Owners Situation: Actively Looking To Relocate

Parking: One Allocated Space

Disclaimer Property Details: Whilst believed to be accurate all details are set out as a general outline only for guidance and do not constitute any part of an offer or contract. Intending purchasers should not rely on them as statements or representation of fact but must satisfy themselves by inspection or otherwise as to their accuracy. We have not carried out a detailed survey nor tested the services, appliances, and specific fittings. Room sizes should not be relied upon for carpets and furnishings. The measurements given are approximate.





- Stunning Home For The Over 55's
- Accommodation Set Over Two Floors
- Refurnished To A High Standard Throughout
- Kitchen With Dining Area
- Dual Aspect Lounge With Garden Views
- Two Fantastic Bedrooms
- Refitted Shower Room & Downstairs W/C
- Close Proximity To The High Street



82

63