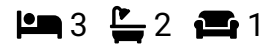




MARCO HARRIS
THE PROPERTY PROFESSIONALS

39% Shared Ownership Part Buy Part Rent

Offers Over £156,000

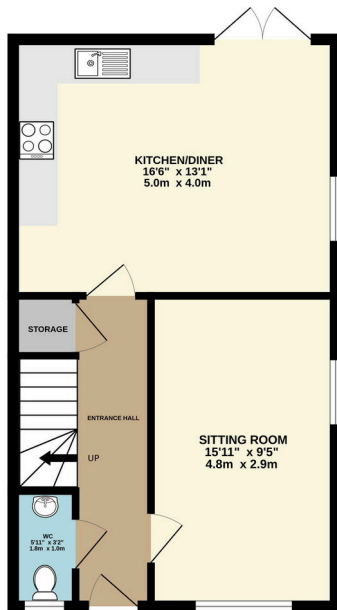




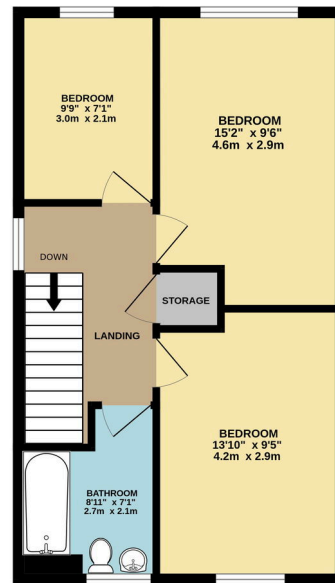
MARCO HARRIS
THE PROPERTY PROFESSIONALS

- Spacious Detached Family Home
- Built In 2021 By Imperial Homes
- Open Plan Kitchen Dining Room
- Upstairs Bathroom & Downstairs Toilet
- Enclosed Rear Garden With Side Gated Access
- Three Well Proportioned Bedrooms
- Also Available To Purchase As A 39% Shared Ownership
- Cosy Sitting Room With Dual Aspect Windows
- Two Allocated Parking Spaces Directly In Front Of The Property
- Walking Distance To West End Village, Utilita Bowl, Hatch Farm & Megan Green

GROUND FLOOR
479 sq.ft. (44.5 sq.m.) approx.



1ST FLOOR
477 sq.ft. (44.3 sq.m.) approx.



TOTAL FLOOR AREA: 956 sq.ft. (88.8 sq.m.) approx.

Whilst every attempt has been made to ensure the accuracy of the floorplan contained here, measurements of doors, windows, rooms and any other items are approximate and no responsibility is taken for any error, omission or mis-statement. This plan is for illustrative purposes only and should be used as such by any prospective purchaser. The services, systems and appliances shown have not been tested and no guarantee as to their operability or efficiency can be given.
Made with Metropix 02025



MARCO HARRIS
THE PROPERTY PROFESSIONALS

****39% SHARED OWNERSHIP PART BUY PART RENT****

****MUST BE QUALIFIED BY VIVID HOMES IN ORDER TO BUY****

****£666 PER MONTH FOR RENT & MAINTENANCE CHARGE****

Welcome To Quob Farm Close!

Positioned in a serene and sought-after location, this stunning three-bedroom detached family home, built by Imperial Homes in 2021, offers contemporary living at its finest. Lovingly maintained by its original owners, this property is ready for you to move in and make it your own.