





The Residence, Saunderton Estate, Wycombe Road, Saunderton.

£360,000

1 1 1



### Property Description:

Experience the pinnacle of contemporary elegance in this expansive 981 sq. ft. one-bedroom apartment at The Residence, Saunderton. Designed for those with a taste for opulence, this exquisite home offers a blend of sophisticated style and high-end finishes reminiscent of a five-star hotel suite.

Situated on the ground floor of this striking art-deco inspired building, this apartment enjoys serene views over the landscaped grounds and mature trees of this development. As you step inside, you are welcomed by a hallway leading to the main bedroom, opulent bathroom, and an impressive open-plan kitchen and living area. The breathtaking parquet flooring flows seamlessly throughout, adding warmth and character, while sleek, modern design touches elevate the ambiance.

The expansive living and dining area is a showcase of refined contemporary living, designed for both relaxation and entertaining. The impeccably styled kitchen features top-of-the-line Bosch appliances, including a dishwasher, washer/dryer, fridge freezer, cooker, hob, and even a built-in wine fridge. The elegant cabinetry and quartz worktops complete this luxurious culinary space.

The generous bedroom is a haven of tranquillity, boasting plush finishes, bespoke fitted wardrobes within the dressing area, and an air of effortless sophistication. The bathroom is an indulgent retreat, complete with sleek fixtures, a spacious walk-in shower, and premium tiling for a spa-like experience.

### Overview:

This exquisite apartment is ideally positioned with access from the main entrance, offering both privacy and convenience. The Residence is set within 8 acres of beautifully landscaped communal grounds, providing a peaceful sanctuary in the Chiltern countryside. Despite its rural charm, Saunderton Station is just 0.1 miles away, offering a direct 47-minute journey to Marylebone.

Residents enjoy exclusive amenities, including a small but well-equipped gym, available free of charge. The development also features two lifts for easy access, although ramps are required to enter the building. The inner courtyard provides a tranquil space for relaxation, adding to the sense of community within this distinguished residence.

### Nearby Attractions:

Saunderton Station = 0.1 mile

High Wycombe = 5.2 miles

Princes Risborough = 4.1 miles

Thame = 11 miles

Hell-Fire Caves - West Wycombe = 3.1 miles

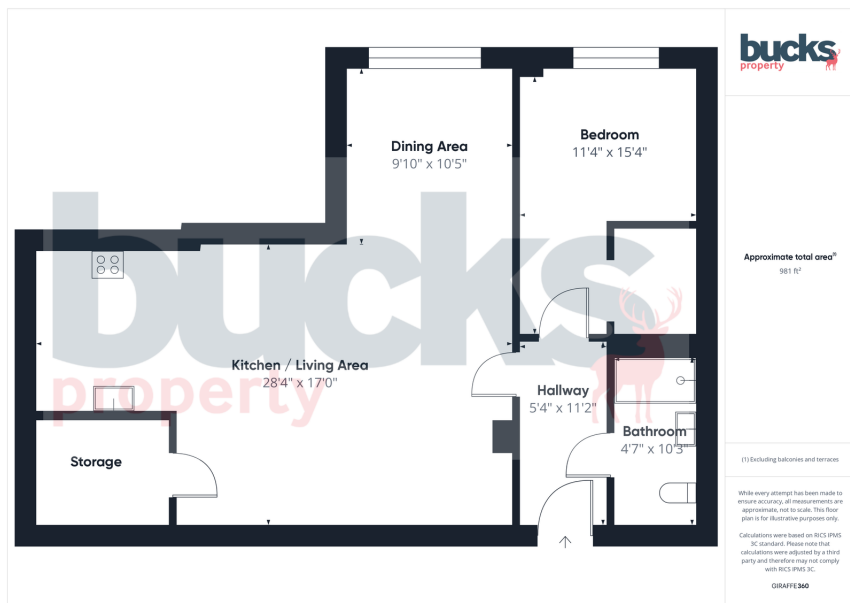
Village pub (walk) = 0.1 miles

### What We Love:

What truly sets this property apart is its seamless blend of luxury and comfort. The grand proportions make every room feel spacious and inviting, while the high-end finishes and stunning parquet flooring add a sense of refined elegance. This property has the wow-factor in abundance and has a real sense of tranquillity. If you like the







- Expansive 981 sq. ft. one-bedroom apartment with opulent finishes.
- Stunning parquet flooring throughout, adding warmth and elegance.
- Spacious open-plan living and dining area with high ceilings.
- Contemporary kitchen with Bosch appliances, quartz worktops, and a built-in wine fridge.
- Generous bedroom with bespoke fitted wardrobes and a luxurious bathroom.
- Large windows offering an abundance of natural light and garden views.
- Art-deco inspired building with a rich history, seamlessly transformed into modern living.
- Convenient location, just 0.1 miles from Saunderton Station (47 minutes to Marylebone).
- Beautifully landscaped communal grounds spanning 8 acres.
- Access to residents' gym at no additional cost.



[bucksproperty.co.uk](https://bucksproperty.co.uk)



1 Meadow Cottages | Little Kingshill | Great Missenden | Buckinghamshire | HP16 0DX  
t. 07780 755590 | e. [sales@bucksproperty.co.uk](mailto:sales@bucksproperty.co.uk)  
Bucks Property Services Ltd Registered Number: 14869929

rightmove

B+hive

PRS

Inventory Hive

OnTheMarket