



price
INDEPENDENT ESTATE AGENTS
POWERED BY
exp UK

Rose Cottage, Main Street, Heslington, York, YO10 5DX

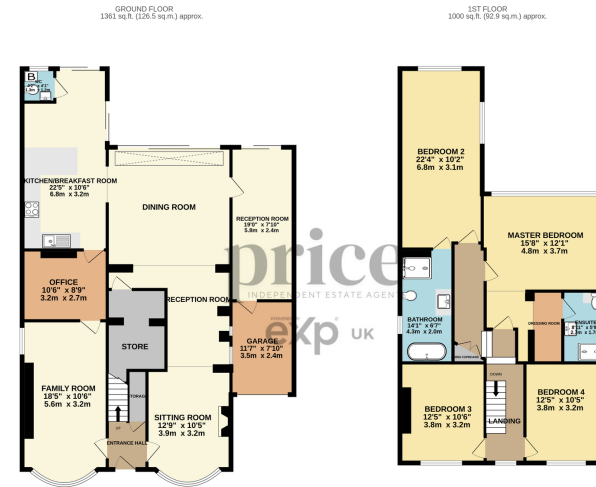
Guide Price £1,100,000

🛏️ 4 🚿 2 🛋️ 5



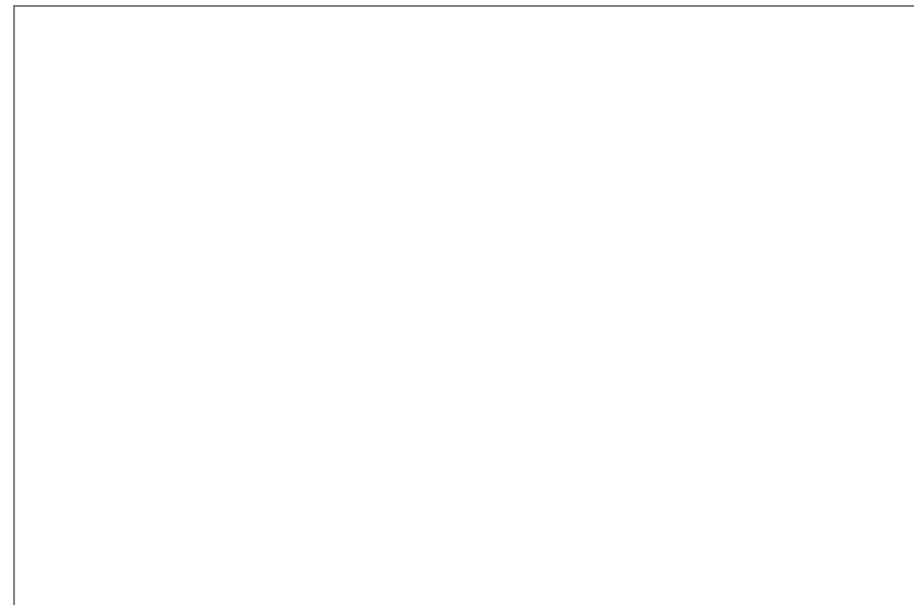
- No Onward Chain
- Period Detached Home
- Envious Main Street Heslington Location
- Over 2,300sq ft Living Space
- Large Set Back Driveway & Garage
- 4 Double Bedrooms, En-Suite, Downstairs W/C
- Master Suite With Dressing Room & Bathroom
- Large Open Plan Reception with Sliding Doors
- Multiple Reception Rooms with Flexible Living
- Floor to Ceiling Windows with Views Over Rear Garden





TOTAL FLOOR AREA: 2362 sq. ft. (218.4 sq. m.) approx.
©2025 Price Estate Agents Ltd. All rights reserved. Measurements are approximate and should not be relied upon for any legal purpose. The actual area and dimensions may vary from those shown and no guarantee is made as to their accuracy or efficiency. Use only as a guide. Make your own checks.

Tucked away in the heart of Heslington, this beautifully presented detached home offers a rare opportunity for those seeking character, space, and an unbeatable location. With over 2,300 sq. ft of thoughtfully designed living space, this property is perfect for families or professionals looking for a home that blends period charm with modern convenience. Set back from the road with a large driveway and garage, it provides both privacy and a sense of grandeur. With no onward chain, this is an exceptional chance to secure a stunning home in a highly desirable setting.



01904 373 131 | www.priceestateagents.com | sales@priceestateagents.com

