



MARC REES

exp[®] UK

@ marc.rees@exp.uk.com

marcrees.exp.uk.com

07966 394 188

Widewell Road, Widewell, Plymouth, Devon, PL6 7DW

Guide Price £425,000

🛏️ 4 🚗 2 🛋️ 2

- Back on the Market since October - Detached Bungalow
- Main Bedroom Suite/Annex with an ensuite bathroom
- Spacious Sitting Room
- Kitchen/Breakfast Room
- Family Bathroom
- 4 Good Sized Bedrooms
- Two Driveway's & Large Garage
- Dining Room
- Utility Room
- No Chain - Please Quote MR0566 when making a telephone enquiry

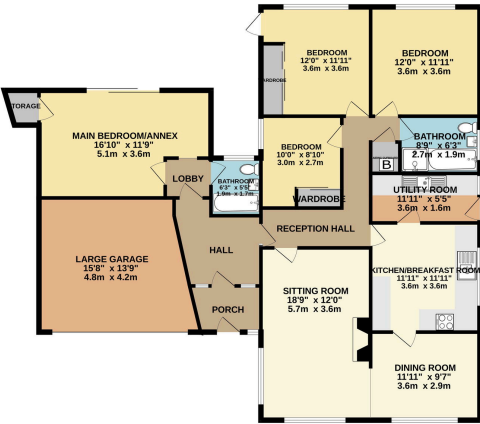


This spacious detached bungalow on Widewell Road offers a versatile layout with a large main bedroom/potential self-contained annex with an ensuite bathroom, ideal for guests or as a rental opportunity. A total of 4 bedrooms, a spacious sitting room, a dining room, a modern fitted kitchen/breakfast room, a utility room and a family bathroom with separate shower enclosure. Additional features include gas central heating, double glazing, and two driveways and a large garage. The property's unique selling point is its location backing onto playing fields, providing a serene and picturesque outlook. With no chain, this bungalow is move-in ready and convenient for those seeking a peaceful yet practical lifestyle. Close to amenities such as schools, Dartmoor National Park, supermarkets, and park and ride facilities, this home offers the best of both worlds – a tranquil retreat with easy access to daily necessities. Please Quote MR0566.





GROUND FLOOR
1675 sq.ft. (155.6 sq.m.) approx.



TOTAL FLOOR AREA: 1675 sq.ft. (155.6 sq.m.) approx.
 While every effort has been made to ensure the accuracy of the figures contained here, measurements of floors, walls, ceilings, etc. may vary slightly from those shown and the advertiser makes no warranty as to the accuracy of the measurements. The advertiser makes no representation as to the condition of the property or the quality of the construction. The advertiser makes no representation as to the condition of the property or the quality of the construction. The advertiser makes no representation as to the condition of the property or the quality of the construction.

