

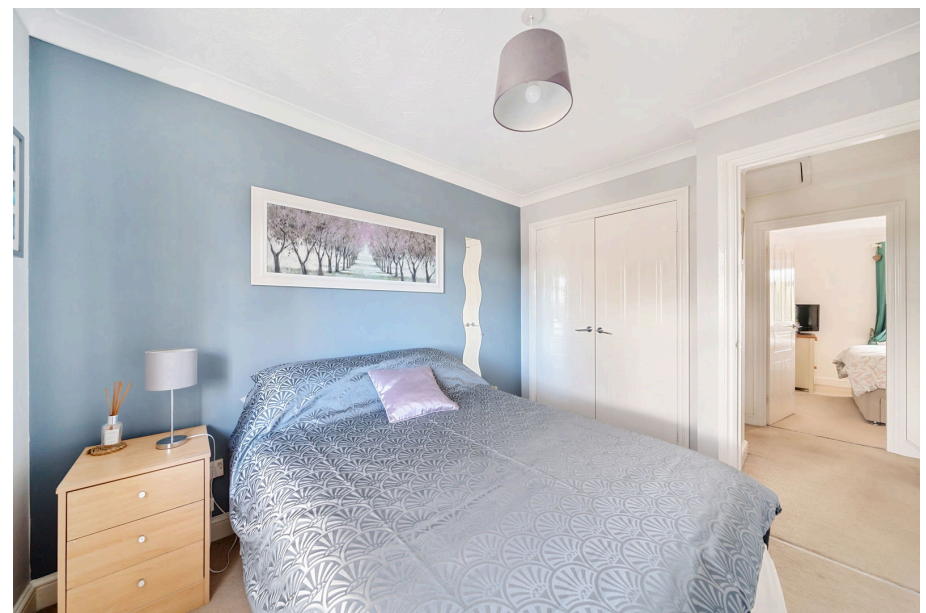


Dacre Close, Charlton, Andover, SP10 4HE

£315,000

3 1 1

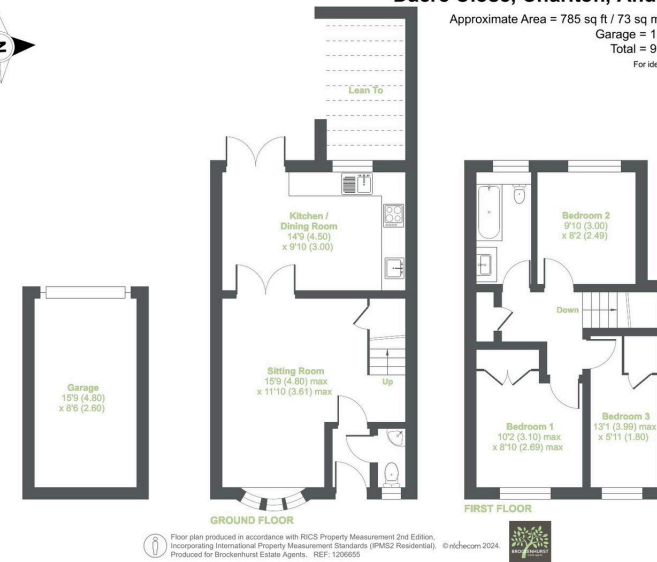






Dacre Close, Charlton, Andover, SP10

Approximate Area = 785 sq ft / 73 sq m (excludes lean to)
Garage = 134 sq ft / 12.4 sq m
Total = 919 sq ft / 85.3 sq m
For identification only - Not to scale



This charming property, located on Dacre Close in Charlton, Andover, offers a well-balanced layout ideal for modern living. On the ground floor, you'll find a welcoming sitting room that opens into a kitchen/dining room, perfect for both family meals and entertaining. A convenient downstairs WC adds to the practicality of the layout. Upstairs, the first floor features three well-proportioned bedrooms, including a generous primary bedroom and two additional rooms that can accommodate family or guests. A family bathroom completes the upstairs layout.

Outside, the property benefits from a private garage, providing storage or parking space. The home also includes a useful lean-to area, adding versatility to the outdoor space. Located in a sought-after area, this property combines comfort and practicality, making it an excellent choice for a wide range of buyers.

1023204, 11:08 AM

Energy performance certificate (EPC) - Find an energy certificate - GOV.UK

Energy performance certificate (EPC)			
3 Dacre Close Charlton ANDOVER SP10 4HE	Energy rating C	Valid until:	22 October 2034
		Certificate number:	2021-3843-4205-7794-1204
Property type		Mid-terrace house	
Total floor area		73 square metres	

Rules on letting this property

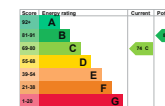
Properties can be let if they have an energy rating from A to E.

You can read [guidance for landlords on the requirements and exemptions](https://www.gov.uk/guidance/landlords-on-the-requirements-and-exemptions) (<https://www.gov.uk/guidance/landlords-on-the-requirements-and-exemptions>).

Energy rating and score

This property's energy rating is C. It has the potential to be B.

[See how to improve this property's energy efficiency.](#)



<https://find-energy-certificate.service.gov.uk/energy-certificate/2021-3843-4205-7794-1204?property>

1/4